

Pump & Motor Division

RPGP/RPGM 300 Series

Vocational Truck Pump Program Catalog

RUICHEN HYDRAULIC MACHINERY MANUFACTURING Co., LTD

<https://www.rchhydraulics.com/>

Table of Contents

Commercial RPGP/RPGM300 Series

RPGP/RPGM315 Frame Size	1-11
Characteristics.....	1
Specifications/Dimensions	2
Performance Data	3
Shaft End Covers	4-5
Drive Shafts.....	6
Port Options	7-8
Ordering Codes.....	9-10
RPGP/RPGM330 Frame Size	11-19
Characteristics.....	11
Specifications/Dimensions	12
Performance Data	13
Shaft End Covers	14-15
Drive Shafts.....	16
Port Options	17
Ordering Codes.....	18-19
RPGP/RPGM350 Frame Size	20-30
Characteristics.....	20
Specifications/Dimensions	21
Performance Data	22
Shaft End Covers	23-24
Drive Shafts.....	25-26
Port Options	27-28
Ordering Codes.....	29-30
RPGP/RPGM365 Frame Size	31-39
Characteristics.....	31
Specifications/Dimensions	32
Performance Data	33
Shaft End Covers	34-35
Drive Shafts.....	36
Port Options	37
Ordering Codes.....	38-39

RPGP/RPGM315 Characteristics

RPGP/RPGM 300/400 Series Gear Pumps & Motors

- **Three-piece cast iron construction**
High efficiency and long life in severe operating environments.
- **Low friction bushing**
Provides strength in heavy duty applications.
- **Balanced thrust plates**
Optimize pump efficiency.
- **Largest journal bearings available**
for high pressure and long life.



Product Features	Description
Pump type	Heavy-duty, cast iron, external gear
Mounting	SAE standard flanges
Ports	SAE split flanges and other types of threaded ports, see Specifications
Shaft style	SAE splined, keyed, and others, see Specifications
Maximum speed	400 - 3000 rpm, see Specifications
Theoretical displacement	See Specifications 0.62 to 2.48 in ³
Drive	Clockwise, counterclockwise, double. Direct drive with flexible coupling is recommended. Pumps subject to radial loads must be specified with an outboard bearing. Axial loading is not allowed.
Inlet pressure	30 psia (15psig) maximum pressure / 5 in. Hg maximum vacuum at operating temperature
Outlet pressure	See Specifications
Hydraulic fluids	Mineral oil, fire resistant fluids: water-oil emulsions 60/40, MFB; water-glycol, HFC; phosphate-esters, HFD (FPM seals required)

Product Features	Description
Fluid viscosity	From 7.5 to 1600 cSt (50 to 7500 sus). Recommended 15 to 75 cSt.
Fluid temperature	Mineral oil with standard seals: 0°F to 180°F (-20°C to 80°C); Fire resistant fluids HFB, HFC: 0°F to 150°F (-20°C to 65°C)
Filtration	ISO 4406 code: <ul style="list-style-type: none"> • 19/16 at 2000 psi/140 bar • 17/14 at 3000 psi/210 bar • 15/12 at 4000 psi/275 bar
Direction of rotation (looking at the drive shaft)	CW, CCW, Bi-Rotational
Multiple pump assemblies	Up to 6 gear selections of the same model, even with different gear widths
Separate or common inlet capability	Common

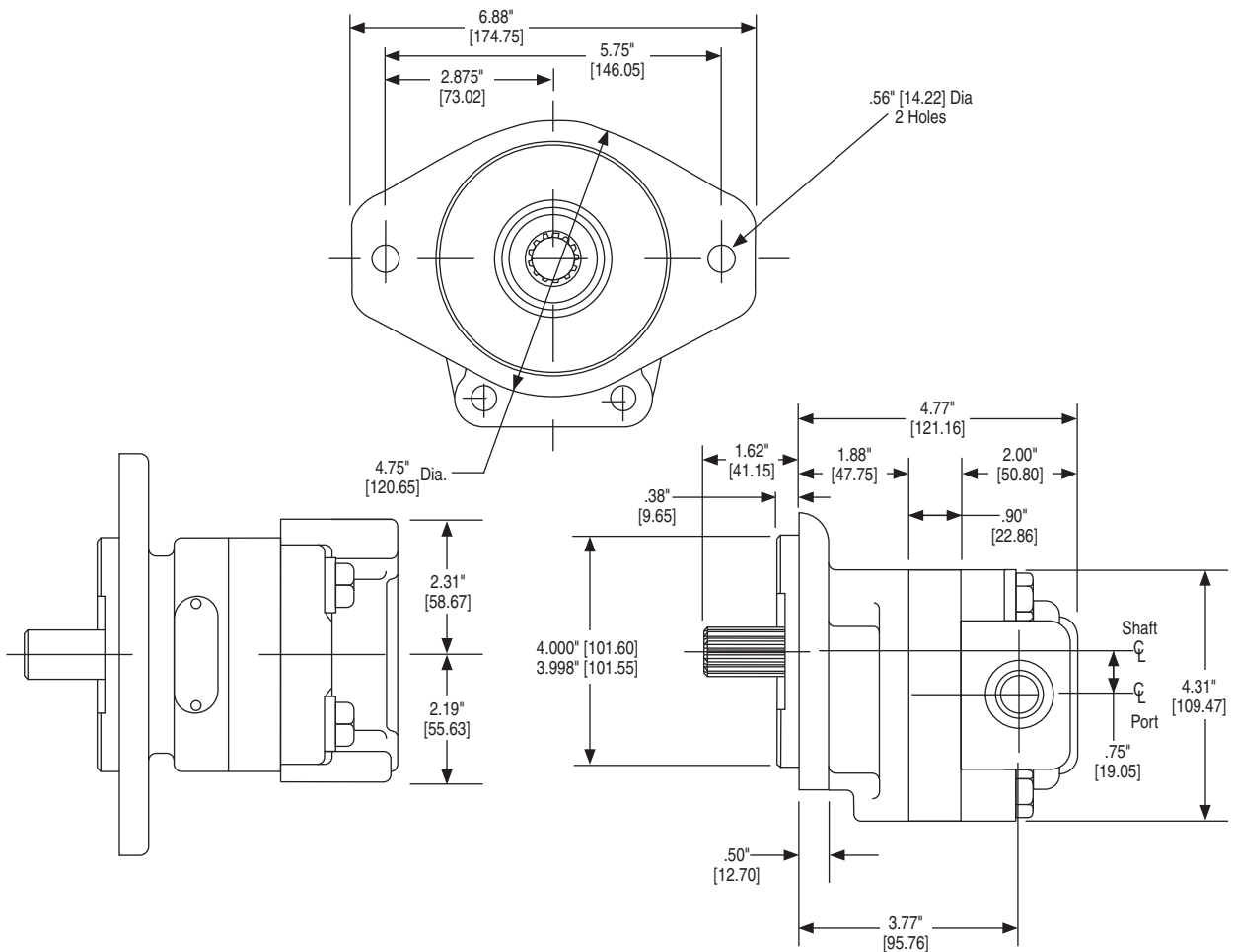
RPGP/RPGM315 Specifications/Dimensions

RPGP/RPGM315 Specifications

RPGP315 Frame Size	05	07	10	12	15	17	20
Displacement – cm ³ /rev (in ³ /rev)	10.2 (0.62)	15.2 (0.93)	20.3 (1.24)	25.4 (1.55)	30.5 (1.86)	35.6 (2.17)	40.6 (2.48)
Max continuous pressure – bar (psi)	241 (3,500)	241 (3,500)	241 (3,500)	241 (3,500)	228 (3,300)	200 (2,900)	172 (2,500)
Max Speed – RPM	3,000	3,000	3,000	3,000	3,000	3,000	3,000
Approximate Weight – Lbs. [kg]	16.0 [7.2]	17 [7.7]	18 [8.2]	19 [8.6]	20 [9.1]	21 [9.5]	22 [10.0]

RPGM315 Frame Size	05	07	10	12	15	17	20
Displacement – cm ³ /rev (in ³ /rev)	10.2 (0.62)	15.2 (0.93)	20.3 (1.24)	25.4 (1.55)	30.5 (1.86)	35.6 (2.17)	40.6 (2.48)
Max continuous pressure – bar (psi)	241 (3,500)	241 (3,500)	241 (3,500)	241 (3,500)	228 (3,300)	200 (2,900)	172 (2,500)
Max Speed – RPM	3,000	3,000	3,000	3,000	3,000	3,000	3,000
Approximate Weight – Lbs. [kg]	16.0 [7.2]	17 [7.7]	18 [8.2]	19 [8.6]	20 [9.1]	21 [9.5]	22 [10.0]

RPGP/RPGM315 Dimensions



RPGP/RPGM315 Performance Data

RPGP/RPGM 300/400 Series Gear Pumps & Motors

RPGP315 Pump Performance Data

Speed RPM	Output Flow		Gear Widths						
	Input Power		1/2"	3/4"	1"	1-1/4"	1-1/2"	1-3/4"	2"
900	GPM		2.0	3.2	4.4	5.5	6.7	7.9	9.0
	LPM		8	12	17	21	26	30	34
	HP		5	8	11	13	15	15	15
	kW		4	6	8	10	11	11	11
1200	GPM		2.8	4.4	6.0	7.6	9.2	10.7	12.2
	LPM		11	17	23	29	35	40	46
	HP		7	11	14	18	20	21	20
	kW		5	8	11	13	15	15	15
1500	GPM		3.6	5.6	7.7	9.6	11.6	13.5	15.4
	LPM		14	21	29	36	44	51	58
	HP		9	13	18	22	25	26	25
	kW		7	10	13	16	19	19	19
1800	GPM		4.4	6.8	9.3	11.6	14.0	16.3	18.6
	LPM		17	26	35	44	53	62	70
	HP		11	16	21	27	30	31	30
	kW		8	12	16	20	22	23	23
2100	GPM		5.2	8.1	10.9	13.6	16.4	19.1	21.8
	LPM		20	30	41	51	62	72	83
	HP		12	19	25	31	35	36	35
	kW		9	14	18	23	26	27	26
2400	GPM		6.0	9.3	12.5	15.6	18.8	21.9	25.1
	LPM		23	35	47	59	71	83	95
	HP		14	21	28	35	40	41	40
	kW		11	16	21	26	30	31	30
3000	GPM		7.7	11.7	15.7	19.6	23.7	27.6	31.5
	LPM		29	44	59	74	90	104	119
	HP		18	27	35	44	50	51	51
	kW		13	20	26	33	37	38	38

Performance data shown are the average results based on a series of laboratory tests of production units and are not necessarily representative of any one unit. Tests were run with the oil reservoir temperature at 120° F and viscosity 150 SUS at 100° F.

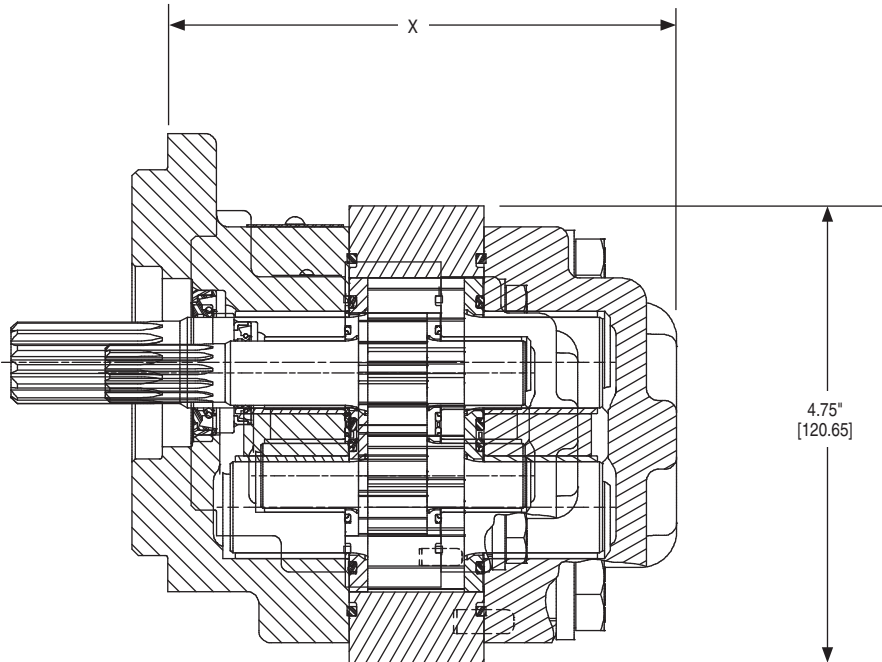
NOTE: Pump output flow is at the maximum rated pressure.

RPGM315 Motor Performance Data

Speed RPM	Output Torque	Gear Widths									
		1" 3500 psi		1-1/4" 3500 psi		1-1/2" 3300 psi		1-3/4" 2900 psi		2" 2500 psi	
		A	B	A	B	A	B	A	B	A	B
900	in/lbs	7.1	665	8.3	830	9.6	940	10.9	965	12.2	950
	Nm	27	75.1	32	93.8	37	106.2	41	109.0	46	107.3
1200	in/lbs	8.8	665	10.5	830	12.2	940	13.8	965	15.5	950
	Nm	33	75.1	40	93.8	46	106.2	52	109.0	59	107.3
1500	in/lbs	10.6	660	12.6	825	14.7	935	16.7	955	18.8	945
	Nm	40	74.6	48	93.2	56	105.6	63	107.9	71	106.8
1800	in/lbs	12.3	655	14.7	820	17.2	930	19.6	950	22.1	940
	Nm	46	74.0	56	92.6	65	105.1	74	107.3	84	106.2
2100	in/lbs	14.0	655	16.8	820	19.7	930	22.5	950	25.4	940
	Nm	53	74.0	64	92.6	75	105.1	85	107.3	96	106.2
2400	in/lbs	15.7	640	18.9	800	22.2	910	25.4	930	28.8	920
	Nm	59	72.3	72	90.4	84	102.8	96	105.1	109	103.9
3000	in/lbs	19.0	640	23.0	800	27.2	905	31.2	925	35.3	915
	Nm	72	72.3	87	90.4	103	102.3	118	104.5	134	103.4

A: Input Flow GPM/LPM; B: Output Torque IN/LBS/Nm

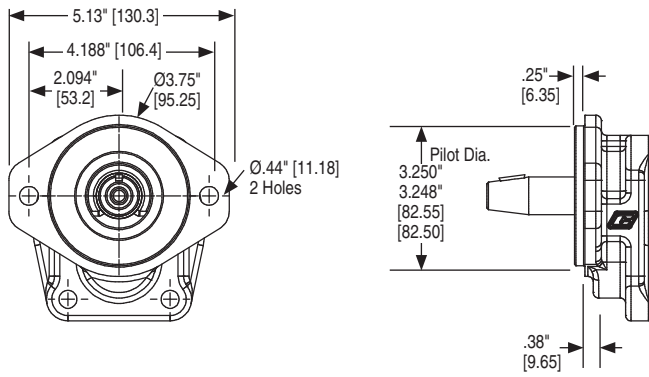
NOTE: In accordance with our policy of continuing product development, we reserve the right to change specifications shown in this catalog without notice.



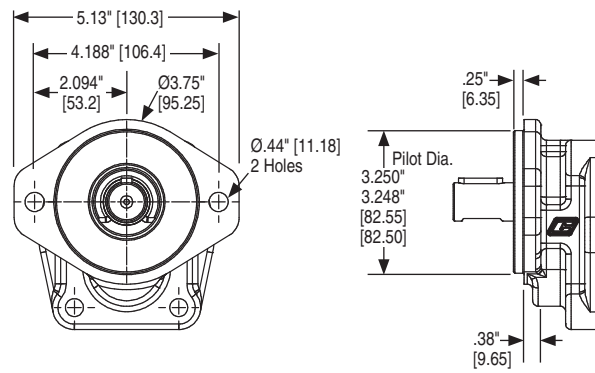
X DIMENSION							
Code	05	07	10	12	15	17	20
89	4.78" [121.41]	5.03" [127.76]	5.28" [134.11]	5.53" [140.46]	5.78" [146.81]	6.03" [153.16]	6.28" [159.51]
93	4.78" [121.41]	5.03" [127.76]	5.28" [134.11]	5.53" [140.46]	5.78" [146.81]	6.03" [153.16]	6.28" [159.51]
95	5.52" [140.21]	5.77" [146.56]	6.02" [152.91]	6.27" [159.26]	6.52" [165.61]	6.77" [171.96]	7.02" [178.31]
96	4.78" [121.41]	5.03" [127.76]	5.28" [134.11]	5.53" [140.46]	5.78" [146.81]	6.03" [153.16]	6.28" [159.51]

RPGP/RPGM315 Shaft End Cover (cont.)

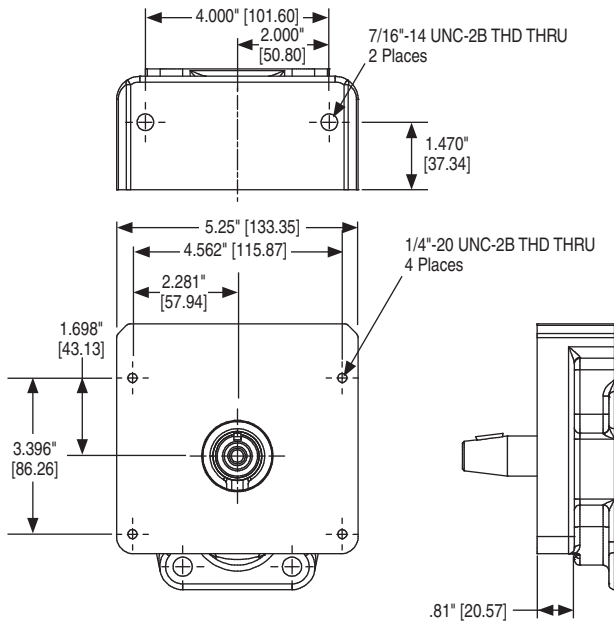
89 SAE A 2-Bolt (Clutch)



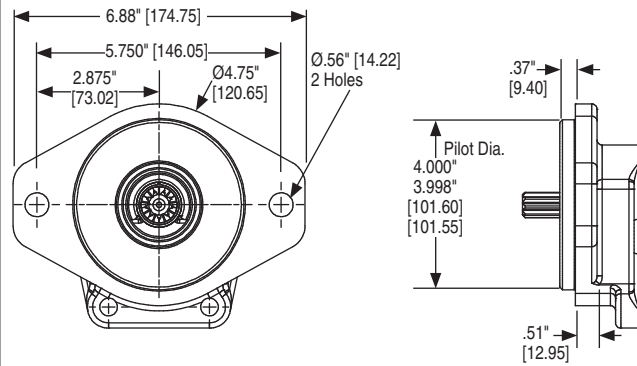
93 SAE A 2-Bolt



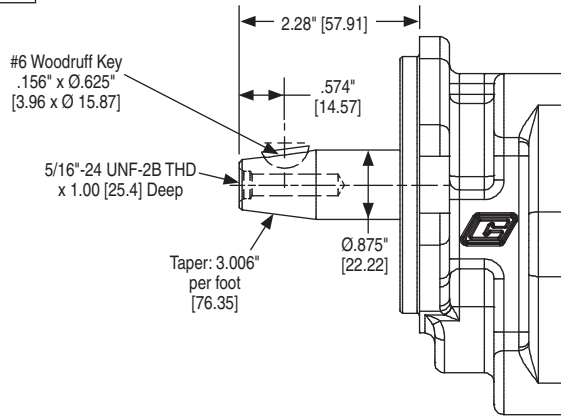
95 Pad Mount (Clutch)



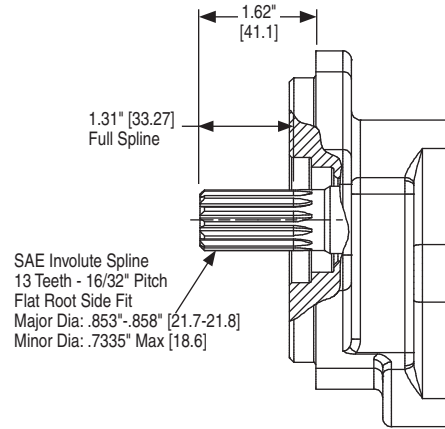
96 SAE B 2-Bolt



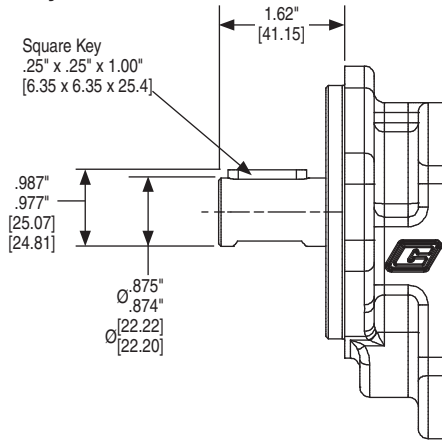
56 Clutch Shaft



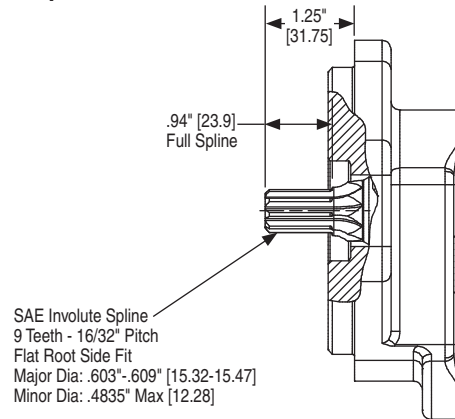
65 SAE B Spline



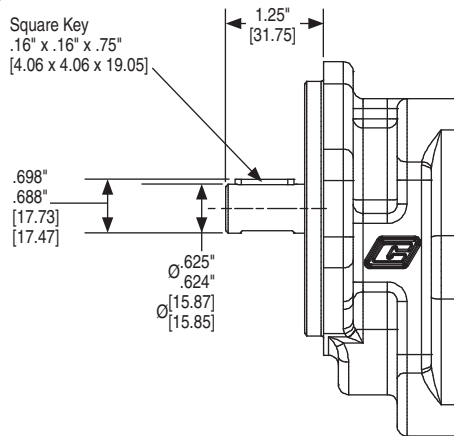
66 SAE B Keyed



96 SAE A Spline



97 SAE A Keyed



Shaft Style	Integral: 1 2 pieces: 2	Maximum Torque		
		lb-ft	Nm	
SAE A	Splined - 9 Teeth	1	80	109
	5/8" Keyed	2	-	-
SAE B	Splined - 13 Teeth	1	242	328
	7/8" Keyed	2	-	-
SAE BB	Splined - 15 Teeth	1	-	-
	1" Keyed	2	-	-
SAE C	Splined - 14 Teeth	1	-	-
	1.25" Keyed	2	-	-
Connecting Shaft			90	122

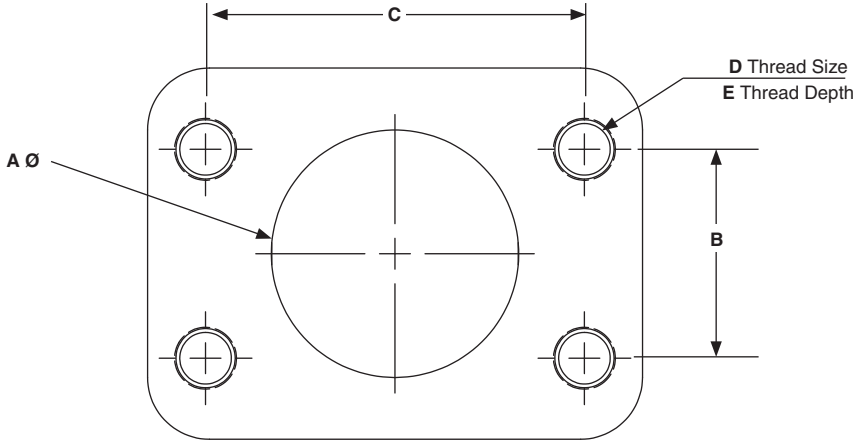
Torque (lb-ft) = $\frac{\text{Pressure (PSI)} \times \text{Displacement (in}^3\text{/rev)}}{75.4}$

Torque (Nm) = $\frac{\text{Pressure (Bar)} \times \text{Displacement (cc/rev)}}{62.8}$

RPGP/RPGM315 Port Options

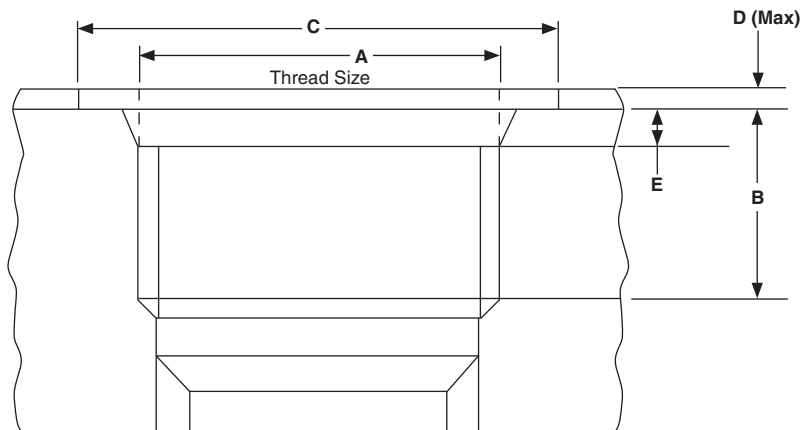
SAE Flanged Ports UNC Thread (SSS)

A		B		C		D	E	
inch	mm	inch	mm	inch	mm	UNC	inch	mm
0.50	12.7	0.69	17.5	1.50	38.1	5/16"-18	0.94	23.9
0.75	19.1	0.88	22.3	1.88	47.7	3/8"-16	0.88	22.4
1.00	25.4	1.03	26.2	2.06	52.2	3/8"-16	0.88	22.4
1.25	31.8	1.19	30.2	2.31	58.7	7/16"-14	1.12	28.4
1.50	38.1	1.41	35.7	2.75	69.9	1/2"-13	1.06	26.9
2.00	50.8	1.69	42.9	3.06	77.8	1/2"-13	1.06	26.9
2.50	63.5	2.00	50.8	3.50	88.9	1/2"-13	1.19	30.2



SAE Straight Thread (ODT)

ODT	A UNF	B		C		D		E	
		inch	mm	inch	mm	inch	mm	inch	mm
1/2"	3/4"-16	.56	14.3	1.19	30.2	.09	2.4	.10	2.55
5/8"	7/8"-14	.66	16.7	1.34	34.1	.09	2.4	.10	2.55
3/4"	1-1/16"-12	.75	19.1	1.62	41.3	.09	2.4	.13	3.30
1"	1-5/16"-12	.75	19.1	1.91	48.5	.09	2.4	.13	3.30
1-1/4"	1-5/8"-12	.75	19.1	2.27	57.7	.09	2.4	.13	3.35
1-1/2"	1-7/8"-12	.75	19.1	2.56	65.0	.09	2.4	.13	3.35
2"	2-1/2"-12	.75	19.1	3.48	88.4	.09	2.4	.13	3.35



RPGP/RPGM315 Ordering Code

Tandem: Repeat if Necessary

RPG 1 315 2 3 3 4 4 5 5 6 6 7 7 8 8 9 9 6 6 7 7 10

Code	1 – Type
P	Pump (PE for fluoro-carbon seals)
M	Motor (no tandem motors available)

Code	2 – Unit
A	Single Unit
B	Tandem Unit (flush studs)
L	Unit with Extended Studs

Code	3 – Shaft End Cover
1	Pump, cw w/o O.B. bearing
2	Pump, ccw w/o O.B. bearing
9	Motor, bi-rot w/o O.B. bearing + 1/4" ODT drain

Code	4 – Shaft End Cover
89	SAE 2-Bolt for clutch
93	SAE A 2-Bolt
95	Pad Mount for clutch
96	SAE B 2-Bolt

Code	5 – Port End Cover			
SIDE PORTED				
	CW	CCW	IN	OUT
SAE Split Flange (pump)				
EJ	JE	1"	3/4"	
EK	KE	1"	1/2"	
EL	LE	3/4"	3/4"	
EM	ME	3/4"	1/2"	
OE	EO	1"	-	
OF	FO	3/4"	-	
OJ	JO	-	3/4"	
OL	LO	-	1/2"	
SAE Split Flange (motor)				
DR-Double		1"	1"	
DS-Double		3/4"	3/4"	
Unported (pump)				
BI		Unported		

Code	5 – Port End Cover (cont.)			
SIDE PORTED (cont.)				
	CW	CCW	IN	OUT
OD Tube Porting (pump)				
FB	BF	1-1/4"	1"	
FC	CF	1-1/4"	7/8"	
FG	GF	1-1/4"	3/4"	
FJ	JF	1-1/4"	5/8"	
FL	LF	1"	1"	
FV	VF	1"	7/8"	
FW	WF	1"	3/4"	
FX	XF	1"	5/8"	
FY	YF	7/8"	7/8"	
FZ	ZF	7/8"	3/4"	
BC	CB	7/8"	5/8"	
BG	GB	7/8"	1/2"	
BJ	JB	3/4"	3/4"	
BL	LB	3/4"	5/8"	
BN	NB	3/4"	1/2"	
BV	VB	1-1/4"	-	
BW	WB	1"	-	
BX	XB	7/8"	-	
BY	YB	3/4"	-	
BZ	ZB	-	1"	
PD	DP	-	7/8"	
PE	EP	-	3/4"	
PM	MP	-	5/8"	
PN	NP	-	1/2"	
OD TUBE PORTING (motor)				
VN-Double		1"	1"	
VR-Double		3/4"	3/4"	
VQ-Double		1/2"	1/2"	

Code	5 – Port End Cover (cont.)			
REAR PORTED				
	CW	CCW	IN	OUT
OD Tube Porting (pump)				
UC	CU	1-1/4"	1"	
UF	FU	1-1/4"	7/8"	
UN	NU	1-1/4"	3/4"	
UD	DU	1"	1"	
UP	PU	1"	7/8"	
UQ	QU	1"	3/4"	
UR	RU	1"	5/8"	
LN	NL	7/8"	7/8"	
LP	PL	7/8"	3/4"	
LQ	QL	7/8"	5/8"	
LR	RL	3/4"	3/4"	
LS	SL	3/4"	5/8"	
LT	TL	3/4"	1/2"	
OD Tube Porting (motor)				
RN-Double		1"	1"	
RQ-Double		3/4"	3/4"	
RS-Double		1/2"	1/2"	
BSP Porting (motor)				
RT-Double		1"	1"	
RV-Double		3/4"	3/4"	
RW-Double		1/2"	1/2"	
National Pipe Thread (motor)				
RX-Double		1"	1"	
RY-Double		3/4"	3/4"	
RZ-Double		1/2"	1/2"	

Code	6 – Gear Housing
AB	Pump
EB	Motor

RPGP/RPGM315 Ordering Code (cont.)

RPGP/RPGM 300/400 Series Gear Pumps & Motors

Tandem: Repeat if Necessary

RPG	1	315	2	3	3	4	4	5	5	6	6	7	7	8	8	9	9	6	6	7	7	10
-----	---	-----	---	---	---	---	---	---	---	---	---	---	---	---	---	---	---	---	---	---	---	----

Code	7 – Gear Width				
	Gear Width	in. ³ /rev.	cm ³ /rev.	Max Pressure	
				psi	bar
05	1/2"	.62	10.2	3500	241
07	3/4"	.93	15.2	3500	241
10	1"	1.24	20.3	3500	241
12	1-1/4"	1.55	25.4	3500	241
15	1-1/2"	1.86	30.5	3300	228
17	1-3/4"	2.17	35.6	2900	200
20	2"	2.48	40.6	2500	172

Code	8 – Drive Shaft
56	Clutch Pump Tapered, 5/16 - 24 thd. (internal), #6 Woodruff Keyed (single unit only); 1:4 taper
65	SAE B Splined
66	SAE B Keyed
96	SAE A Splined
97	SAE A Keyed

For Single or Tandem Units - unless noted

Code	9 – Bearing Carriers				
DUAL OUTLET - PUMP ONLY					
Outlets: for clockwise porting the top port number comes first; for counter-clockwise porting the bottom port number comes first					
CW	CCW	IN	OUT		
SAE Split Flange					
CA	AC	1-1/4"	3/4"	3/4"	
DA	AD	1-1/4"	3/4"	1/2"	
EA	AE	1-1/4"	1/2"	1/2"	
FA	AF	1"	3/4"	3/4"	
GA	AG	1"	3/4"	1/2"	
HA	AH	1"	1/2"	1/2"	
OD Tube Porting					
JG	GJ	1-1/2"	1"	1"	
KG	GK	1-1/2"	1"	7/8"	
LG	GL	1-1/2"	7/8"	7/8"	
MG	GM	1-1/2"	1"	3/4"	
NG	GN	1-1/2"	3/4"	3/4"	
PG	GP	1-1/4"	1"	1"	
QG	GQ	1-1/4"	1"	7/8"	
RG	GR	1-1/4"	7/8"	7/8"	
SG	GS	1-1/4"	1"	3/4"	
TG	GT	1-1/4"	3/4"	3/4"	
UG	GU	1-1/4"	3/4"	5/8"	
VG	GV	1-1/4"	3/4"	1/2"	
WG	GW	1-1/4"	5/8"	5/8"	
XG	GX	1-1/4"	1/2"	1/2"	
YG	GY	1"	1"	1"	
ZG	GZ	1"	1"	7/8"	
RC	CR	1"	7/8"	7/8"	
SC	CS	1"	1"	3/4"	
TC	CT	1"	3/4"	3/4"	
VC	CV	1"	3/4"	5/8"	
WC	CW	1"	3/4"	1/2"	
XC	CX	1"	5/8"	5/8"	
YC	CY	1"	1/2"	1/2"	

Code	9 – Bearing Carriers (cont.)			
SINGLE OUTLET - PUMP ONLY				
Outlet for front section				
CW	CCW	IN	OUT	
SAE Split Flange				
CJ	JC	1-1/4"	1-1/4"	
CL	LC	1-1/4"	1"	
CM	MC	1-1/4"	3/4"	
HB	BH	1-1/4"	1/2"	
HC	CH	1"	1"	
HF	FH	1"	3/4"	
HL	LH	1"	1/2"	
HM	MH	3/4"	3/4"	
HN	NH	3/4"	1/2"	
OD Tube Porting				
KB	BK	1-1/2"	1-1/2"	
KC	CK	1-1/2"	1-1/4"	
KF	FK	1-1/2"	1"	
KL	LK	1-1/2"	7/8"	
KM	MK	1-1/2"	3/4"	
KN	NK	1-1/4"	1-1/4"	
KO	OK	1-1/4"	1"	
KP	PK	1-1/4"	7/8"	
KQ	QK	1-1/4"	3/4"	
MB	BM	1-1/4"	5/8"	
ML	LM	1-1/4"	1/2"	
MN	NM	1"	1"	
MQ	QM	1"	7/8"	
MR	RM	1"	3/4"	
MS	SM	1"	5/8"	
MT	TM	1"	1/2"	
MU	UM	3/4"	3/4"	
MV	VM	3/4"	5/8"	
MW	WM	3/4"	1/2"	
Common Inlet Passage				
C	D	No Ports		

Code	10 – Connecting Shaft
1	Connecting Shaft
For connecting tandem units	

RPGP/RPGM330 Characteristics

- **Three-piece cast iron construction**
High efficiency and long life in severe operating environments.
- **Low friction bushing**
Provides strength in heavy duty applications.
- **Balanced thrust plates**
Optimize pump efficiency.
- **Largest journal bearings available**
for high pressure and long life.



Product Features	Description
Pump Type	Heavy-duty, cast iron, external gear
Mounting	SAE standard flanges, ZF, others
Ports	SAE split flanges and other types of threaded ports, see Specifications
Shaft Style	SAE splined, keyed, and others, see Specifications
Maximum Speed	400 - 3000 rpm, see Specifications
Theor. displacement	See Specifications
Drive	Clockwise, counterclockwise, double. Direct drive with flexible coupling is recommended. Pumps subject to radial loads must be specified with an outboard bearing. Axial loading is not allowed.
Inlet pressure	30 psia (15psig) maximum pressure / 5 in. Hg maximum vacuum at operating temperature
Outlet pressure	See Specifications
Hydraulic fluids	Mineral oil, fire resistant fluids: water-oil emulsions 60/40, MFB; water-glycol, HFC; phosphate-esters, HFD (FPM seals required)

Product Features	Description
Fluid viscosity	From 7.5 to 1600 cSt (50 to 7500 sus). Recommended 15 to 75 cSt.
Fluid temperature	Mineral oil with standard seals: 0°F to 180°F (-20°C to 80°C); Fire resistant fluids HFB, HFC: 0°F to 150°F (-20°C to 65°C)
Filtration	ISO 4406 code: <ul style="list-style-type: none"> • 19/16 at 2000 psi/140 bar • 17/14 at 3000 psi/210 bar • 15/12 at 4000 psi/275 bar
Direction of rotation (looking at the drive shaft)	CW, CCW, Bi-Rotational
Multiple pump assemblies	Up to 6 gear selections of the same model, even with different gear widths
Separate or common inlet capability	Common

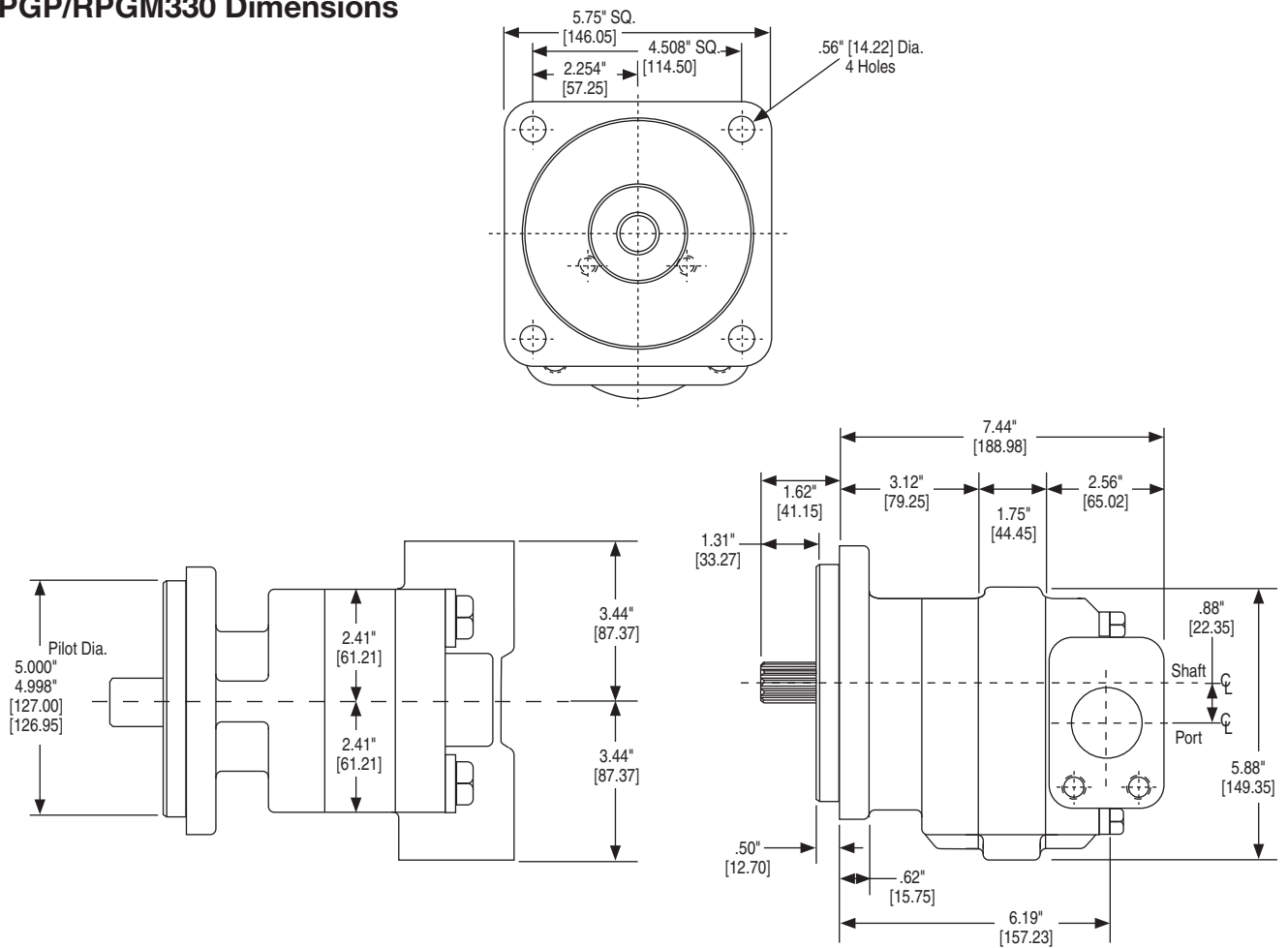
RPGP/RPGM 300/400 Series Gear Pumps & Motors

RPGP/RPGM330 Specifications

RPGP330 Frame Size	05	07	10	12	15	17	20
Displacement – cm ³ /rev (in ³ /rev)	16.1 (0.99)	24.2 (1.48)	32.3 (1.97)	40.4 (2.46)	48.4 (2.96)	56.5 (3.45)	64.6 (3.94)
Max continuous pressure – bar (psi)	241 (3,500)	241 (3,500)	241 (3,500)	241 (3,500)	241 (3,500)	224 (3,250)	207 (3,000)
Max Speed – RPM	3,000	3,000	3,000	3,000	3,000	3,000	3,000
Approximate Weight – Lbs. [kg]	33.6 [15.2]	34.8 [15.8]	36 [16.3]	37.3 [16.9]	38.5 [17.5]	40 [18.1]	41.3 [18.7]

RPGM330 Frame Size	05	07	10	12	15	17	20
Displacement – cm ³ /rev (in ³ /rev)	16.1 (0.99)	24.2 (1.48)	32.3 (1.97)	40.4 (2.46)	48.4 (2.96)	56.5 (3.45)	64.6 (3.94)
Max continuous pressure – bar (psi)	241 (3,500)	241 (3,500)	241 (3,500)	241 (3,500)	241 (3,500)	224 (3,250)	207 (3,000)
Max Speed – RPM	3,000	3,000	3,000	3,000	3,000	3,000	3,000
Approximate Weight – Lbs. [kg]	33.6 [15.2]	34.8 [15.8]	36 [16.3]	37.3 [16.9]	38.5 [17.5]	40.0 [18.1]	41.3 [18.7]

RPGP/RPGM330 Dimensions



RPGP/RPGM330 Performance Data

RPGP330 Pump Performance Data

Speed RPM	Output Flow Input Power	Gear Widths						
		1/2"	3/4"	1"	1-1/4"	1-1/2"	1-3/4"	2"
900	GPM	3.2	5.1	7.0	8.8	10.6	12.4	14.3
	LPM	12	19	26	33	40	47	54
	HP	9	13	17	21	26	28	29
	kW	6	10	13	16	19	21	22
1200	GPM	4.5	7.0	9.5	12.0	14.5	16.9	19.4
	LPM	17	26	36	45	55	64	73
	HP	11	17	23	28	34	37	39
	kW	8	13	17	21	25	28	29
1500	GPM	5.8	8.9	12.1	15.2	18.3	21.4	24.5
	LPM	22	34	46	57	69	81	93
	HP	14	21	28	35	43	46	49
	kW	11	16	21	26	32	34	36
1800	GPM	7.1	10.8	14.7	18.4	22.1	25.9	29.6
	LPM	27	41	55	70	84	98	112
	HP	17	26	34	43	51	55	58
	kW	13	19	25	32	38	41	44
2100	GPM	8.4	12.7	17.2	21.6	26.0	30.3	34.7
	LPM	32	48	65	82	98	115	131
	HP	20	30	40	50	60	65	68
	kW	15	22	30	37	44	48	51
2400	GPM	9.6	14.7	19.8	24.8	29.8	34.8	39.8
	LPM	36	55	75	94	113	132	151
	HP	23	34	45	57	68	74	78
	kW	17	25	34	42	51	55	58
3000	GPM	12.2	18.5	24.9	31.2	37.5	43.8	50.1
	LPM	46	70	94	118	142	166	190
	HP	28	43	57	71	85	92	97
	kW	21	32	42	53	64	69	73

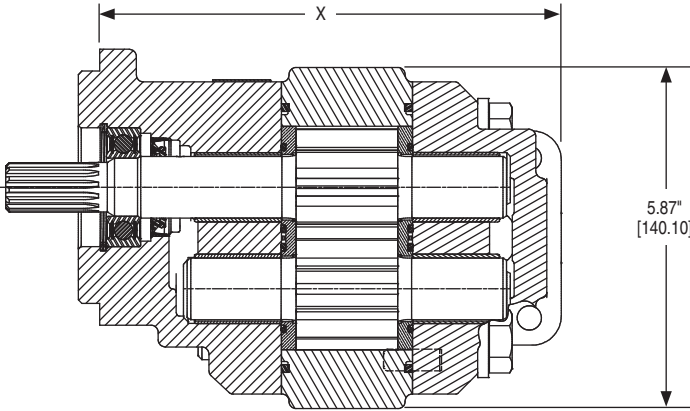
RPGM330 Motor Performance Data

Speed RPM	Output Torque	Gear Widths									
		1" 3500 psi		1-1/4" 3500 psi		1-1/2" 3500 psi		1-3/4" 3250 psi		2" 3000 psi	
		A	B	A	B	A	B	A	B	A	B
900	in/lbs	10.1	1010	12.3	1270	14.5	1530	16.7	1665	19.0	1770
	Nm	38	114.1	47	143.5	55	172.9	63	188.1	72	200.0
1200	in/lbs	12.8	1005	15.7	1265	18.6	1525	21.4	1660	24.3	1760
	Nm	49	113.6	59	142.9	70	172.3	81	187.6	92	198.9
1500	in/lbs	15.6	1000	19.1	1255	22.6	1515	26.1	1650	29.6	1750
	Nm	59	113.0	72	141.8	85	171.2	99	186.4	112	197.7
1800	in/lbs	18.4	995	22.5	1250	26.6	1505	30.8	1640	34.9	1740
	Nm	69	112.4	85	141.2	101	170.0	116	185.3	132	196.6
2100	in/lbs	21.1	990	25.9	1240	30.7	1495	35.4	1625	40.2	1720
	Nm	80	111.9	98	140.1	116	168.9	134	183.6	152	194.3
2400	in/lbs	23.9	985	29.3	1235	34.7	1480	40.1	1605	45.5	1695
	Nm	90	111.3	111	139.5	131	167.2	152	181.3	172	191.5
3000	in/lbs	29.2	980	35.9	1230	42.6	1475	49.3	1595	56.0	1685
	Nm	110	110.7	136	139.0	161	166.7	186	180.2	212	190.4

A: Input Flow GPM/LPM; B: Output Torque IN/LBS/Nm

Note: In accordance with our policy of continuing product development, we reserve the right to change specifications shown in this catalog without notice.

RPGP/RPGM330 Shaft End Cover

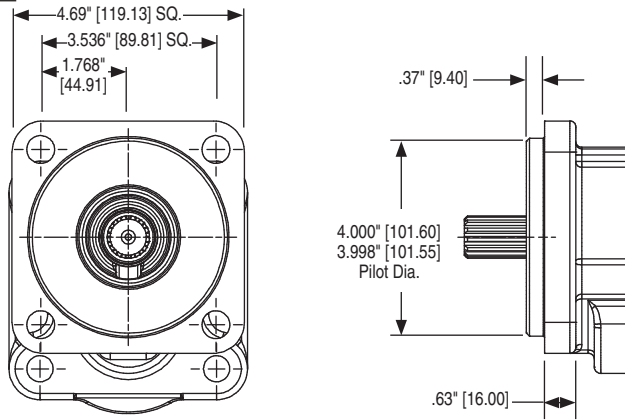


X DIMENSION							
SEC CODE	05	07	10	12	15	17	20
42	6.69" [169.93]	6.94" [176.28]	7.19" [182.63]	7.44" [188.98]	7.69" [195.33]	7.94" [201.68]	8.19" [208.02]
78	6.69" [169.93]	6.94" [176.28]	7.19" [182.63]	7.44" [188.98]	7.69" [195.33]	7.94" [201.68]	8.19" [208.02]
97	6.69" [169.93]	6.94" [176.28]	7.19" [182.63]	7.44" [188.98]	7.69" [195.33]	7.94" [201.68]	8.19" [208.02]

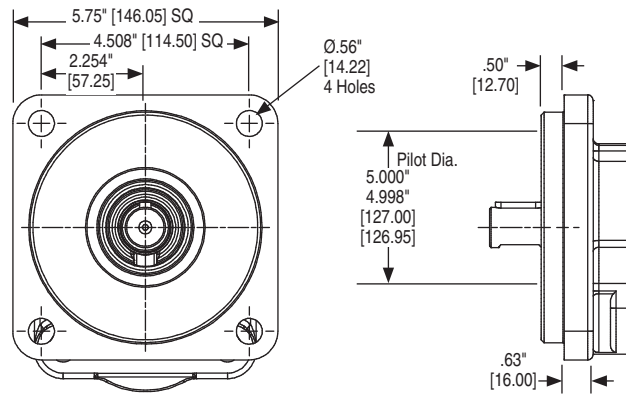
RPGP/RPGM330 Shaft End Cover (cont.)

RPGP/RPGM 300/400 Series Gear Pumps & Motors

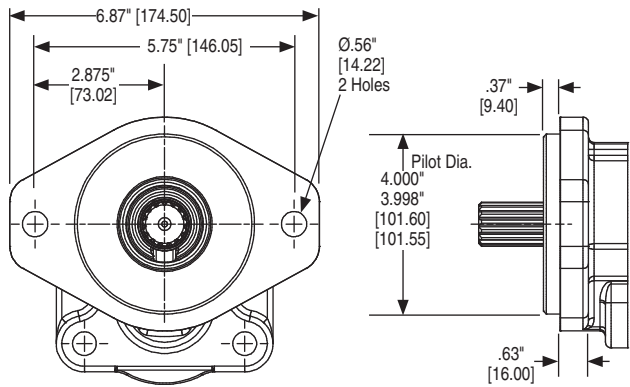
42 SAE B 4-Bolt



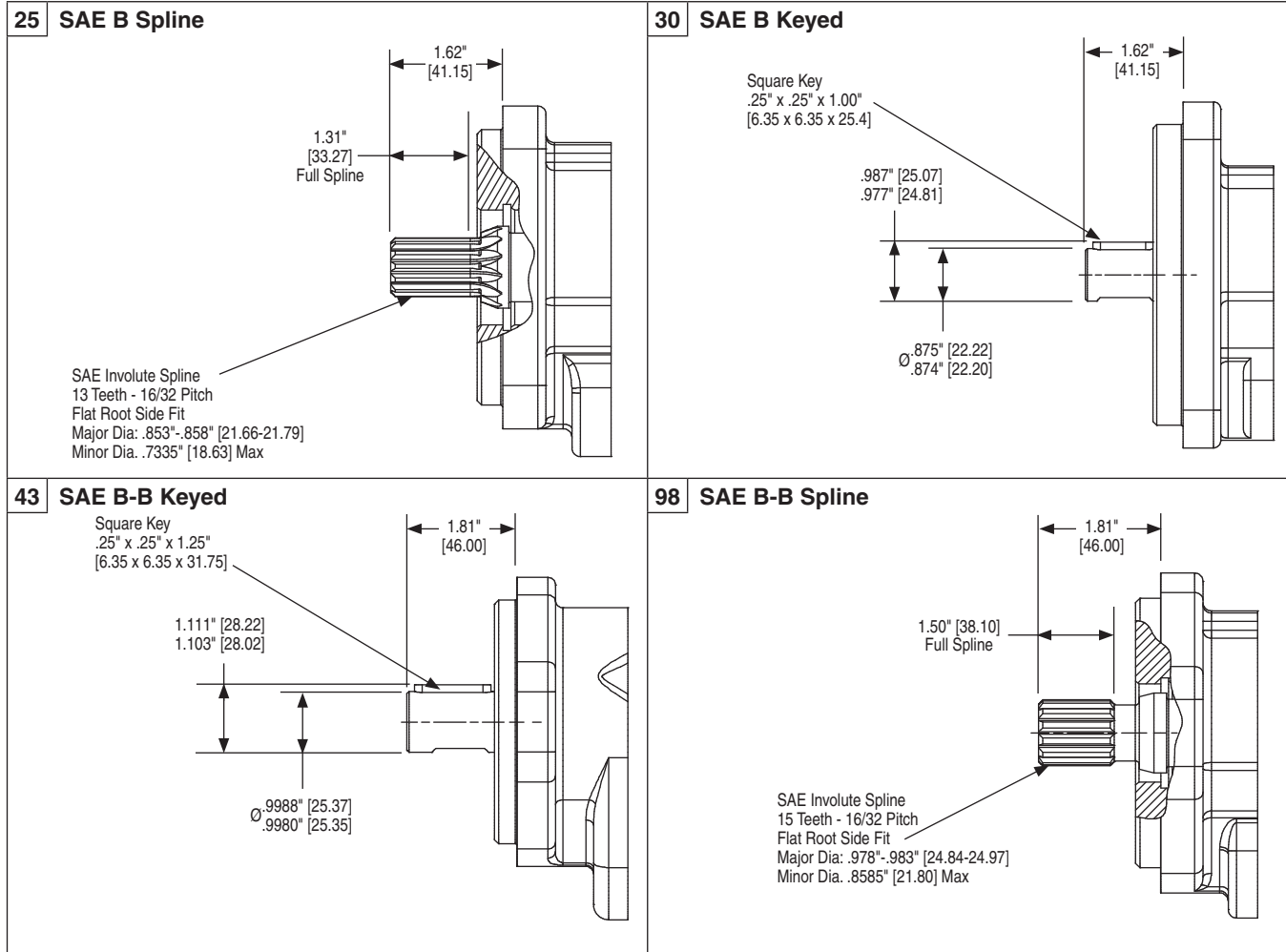
78 SAE C 4-Bolt



97 SAE B 2-Bolt



RPGP/RPGM330 Drive Shafts



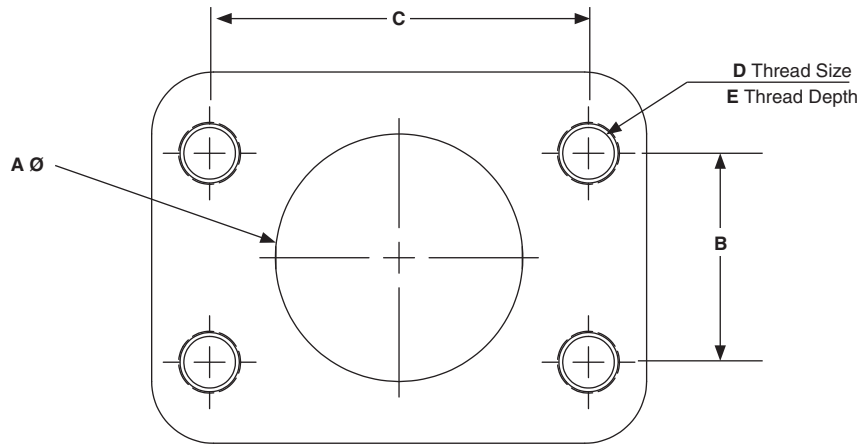
Shaft Style		Integral: 1 2 pieces: 2	Maximum Torque	
			lb-ft	Nm
SAE A	Splined - 9 Teeth	1	-	-
	5/8" Keyed	1	-	-
SAE B	Splined - 13 Teeth	1	242	328
	7/8" Keyed	1	167	226
SAE BB	Splined - 15 Teeth	1	371	503
	1" Keyed	1	250	339
SAE C	Splined - 14 Teeth	1	-	-
	1.25" Keyed	1	-	-
Connecting Shaft		2	159	215

Torque (lb-ft) = $\frac{\text{Pressure (PSI)} \times \text{Displacement (in}^3\text{/rev)}}{75.4}$

Torque (Nm) = $\frac{\text{Pressure (Bar)} \times \text{Displacement (cc/rev)}}{62.8}$

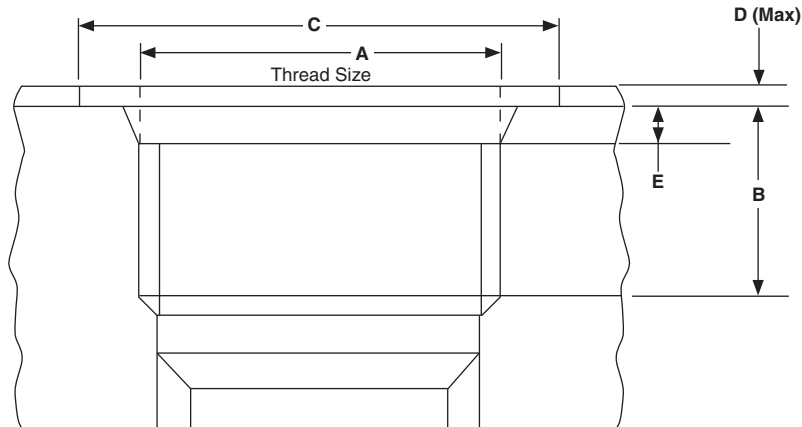
SAE Flanged Ports UNC Thread (SSS)

A		B		C		D	E	
inch	mm	inch	mm	inch	mm	UNC	inch	mm
0.50	12.7	0.69	17.5	1.50	38.1	5/16"-18	0.94	23.9
0.75	19.1	0.88	22.3	1.88	47.7	3/8"-16	0.88	22.4
1.00	25.4	1.03	26.2	2.06	52.2	3/8"-16	0.88	22.4
1.25	31.8	1.19	30.2	2.31	58.7	7/16"-14	1.12	28.4
1.50	38.1	1.41	35.7	2.75	69.9	1/2"-13	1.06	26.9
2.00	50.8	1.69	42.9	3.06	77.8	1/2"-13	1.06	26.9
2.50	63.5	2.00	50.8	3.50	88.9	1/2"-13	1.19	30.2



SAE Straight Thread (ODT)

ODT	A UNF	B		C		D		E	
		inch	mm	inch	mm	inch	mm	inch	mm
1/2"	3/4"-16	.56	14.3	1.19	30.2	.09	2.4	.10	2.55
5/8"	7/8"-14	.66	16.7	1.34	34.1	.09	2.4	.10	2.55
3/4"	1-1/16"-12	.75	19.1	1.62	41.3	.09	2.4	.13	3.30
1"	1-5/16"-12	.75	19.1	1.91	48.5	.09	2.4	.13	3.30
1-1/4"	1-5/8"-12	.75	19.1	2.27	57.7	.09	2.4	.13	3.35
1-1/2"	1-7/8"-12	.75	19.1	2.56	65.0	.09	2.4	.13	3.35
2"	2-1/2"-12	.75	19.1	3.48	88.4	.09	2.4	.13	3.35



RPGP/RPGM330 Ordering Code

Tandem: Repeat if Necessary

RPG 1 330 2 3 3 4 4 5 5 6 6 7 7 8 8 9 9 6 6 7 7 10

Code	1 – Type
P	Pump
M	Motor

Code	2 – Unit
A	Single Unit
B	Tandem Unit (flush studs)
C	Single or Tandem with two-piece shaft (O.B. bearing required)
L	Unit with Extended Studs

Code	3 – Shaft End Cover
1	Pump, cw w/o O.B. bearing
2	Pump, ccw w/o O.B. bearing
4	Pump, cw with O.B. bearing
5	Pump, ccw with O.B. bearing
8	Motor, bi-rot with O.B. bearing + 1/4" ODT drain
9	Motor, bi-rot w/o O.B. bearing + 1/4" ODT drain

Code	4 – Shaft End Cover
42	SAE B 4-Bolt
78	SAE C 4-Bolt
97	SAE B 2-Bolt

Code	5 – Port End Cover			
SIDE PORTED				
	CW	CCW	IN	OUT
SAE Split Flange (pump)				
EJ	JE	1-1/2"	1-1/4"	
EK	KE	1-1/2"	1"	
EL	LE	1-1/4"	1-1/4"	
EM	ME	1-1/4"	1"	
EN	NE	1"	1"	
OF	FO	1-1/2"	-	
OG	GO	1-1/4"	-	
OJ	JO	1"	-	
OM	MO	-	1-1/4"	
ON	NO	-	1"	
SAE Split Flange (motor)				
CS-Double		1-1/4"	1-1/4"	
CT-Double		1"	1"	
CV-Double		3/4"	3/4"	
OD Tube Porting (pump)				
FJ	JF	1-1/4"	1"	
FL	LF	1"	1"	
BG	GB	1-1/4"	-	
BJ	JB	1"	-	
BN	NB	-	1"	
OD Tube Porting (motor)				
VC-Double		1-1/4"	1-1/4"	
VN-Double		1"	1"	
VR-Double		3/4"	3/4"	
Unported (pump)				
BI		Unported		
Unported (motor)				
BA		Unported		

Code	6 – Gear Housing
AB	Pump
EB	Motor

Code	7 – Gear Width				
	Gear Width	in. ³ /rev.	cm ³ /rev.	Max Pressure	
				psi	bar
05	1/2"	0.99	16.1	3500	241
07	3/4"	1.48	24.2	3500	241
10	1"	1.97	32.3	3500	241
12	1-1/4"	2.46	40.4	3500	241
15	1-1/2"	2.96	48.4	3500	241
17	1-3/4"	3.45	56.5	3250	224
20	2"	3.94	64.6	3000	207

Code	8 – Shaft Type
7	SAE C Spline (two-piece only)
11	SAE C Keyed (two-piece only)
25	SAE B Spline
30	SAE B Keyed
43	SAE BB Keyed

RPGP/RPGM330 Ordering Code (cont.)

RPGP/RPGM 300/400 Series Gear Pumps & Motors

Tandem: Repeat if Necessary

RPG	1	330	2	3	3	4	4	5	5	6	6	7	7	8	8	9	9	6	6	7	7	10
-----	---	-----	---	---	---	---	---	---	---	---	---	---	---	---	---	---	---	---	---	---	---	----

98	SAE BB Splined				
For Single or Tandem Units - unless noted					
Code	9 – Bearing Carriers				
DUAL OUTLET - PUMP ONLY					
Outlets: for clockwise porting the top port number comes first; for counter-clockwise porting the bottom port number comes first					
CW	CCW	IN	OUT		
SAE Split Flange					
AM	MA	2"	1-1/4"	1-1/4"	
AN	NA	2"	1-1/4"	1"	
AP	PA	2"	1"	1"	
AT	TA	1-1/2"	1-1/4"	1-1/4"	
AU	UA	1-1/2"	1-1/4"	1"	
AV	VA	1-1/2"	1"	1"	
AW	WA	1-1/4"	1-1/4"	1-1/4"	
AX	XA	1-1/4"	1-1/4"	1"	
AY	YA	*1-1/4"	1"	1"	
AZ	ZA	1"	1"	1"	
OD Tube Porting					
GV	VG	1-1/2"	1"	1"	
GY	YG	1-1/4"	1"	1"	
GZ	ZG	1"	1"	1"	

* Outlet port for rear section

Code	9 – Bearing Carriers (cont.)			
SINGLE OUTLET - PUMP ONLY				
Outlet for front section				
CW	CCW	IN	OUT	
SAE Split Flange				
HB	BH	2"	1-1/2"	
HC	CH	2"	1-1/4"	
HF	FH	2"	1"	
HL	LH	1-1/2"	1-1/2"	
HM	MH	1-1/2"	1-1/4"	
HN	NH	1-1/2"	1"	
HO	OH	1-1/4"	1-1/4"	
HP	PH	1-1/4"	1"	
HQ	QH	1"	1"	
RS	SR	1-1/4"	1"	
OD Tube Porting				
KM	MK	1-1/2"	1-1/4"	
KN	NK	1-1/2"	1"	
KO	OK	1-1/4"	1-1/4"	
KP	PK	1-1/4"	1"	
KQ	QK	1"	1"	

Code	9 – Bearing Carriers (cont.)			
COMBINED OUTLET				
Outlet for front section				
CW	CCW	IN	OUT	
SAE Split Flange (pump)				
UN	NU	2"	1-1/2"	
UO	OU	2"	1-1/4"	
UP	PU	1-1/2"	1-1/2"	
UQ	QU	1-1/2"	1-1/4"	
UR	RU	1-1/4"	1-1/4"	
SAE Split Flange (motor)				
BB-Double	1-1/2"		1-1/2"	
CC-Double	1-1/4"		1-1/4"	
EE-Double	1"		1"	
FF-Double	3/4"		3/4"	
OD Tube Porting (pump)				
PQ	QP	1-1/2"	1-1/4"	
PR	RP	1-1/4"	1-1/4"	
OD Tube Porting (motor)				
NN-Double	1-1/4"		1-1/4"	
QQ-Double	1"		1"	
RR-Double	3/4"		3/4"	
Common Inlet Passage				
C	D	No Ports		

Code	10 – Connecting Shaft	
1	Connecting Shaft	
For connecting tandem units		

RPGP/RPGM 300/400 Series Gear Pumps & Motors

RPGP/RPGM350 Characteristics

- **Three-piece cast iron construction**
High efficiency and long life in severe operating environments.
- **Low friction bushing**
Provides strength in heavy duty applications.
- **Balanced thrust plates**
Optimize pump efficiency.
- **Largest journal bearings available**
for high pressure and long life.



Product Features	Description
Pump Type	Heavy-duty, cast iron, external gear
Mounting	SAE standard flanges, ZF, others
Ports	SAE split flanges and other types of threaded ports, see Specifications
Shaft Style	SAE splined, keyed, and others, see Specifications
Maximum Speed	2,400 RPM
Theor. displacement	See Specifications
Drive	Clockwise, counterclockwise, double. Direct drive with flexible coupling is recommended. Pumps subject to radial loads must be specified with an outboard bearing. Axial loading is not allowed.
Inlet pressure	30 psia (15psig) maximum pressure / 5 in. Hg maximum vacuum at operating temperature
Outlet pressure	See Specifications
Hydraulic fluids	Mineral oil, fire resistant fluids: water-oil emulsions 60/40, MFB; water-glycol, HFC; phosphate-esters, HFD (FPM seals required)

Product Features	Description
Fluid viscosity	From 7.5 to 1600 cSt (50 to 7500 sus). Recommended 15 to 75 cSt.
Fluid temperature	Mineral oil with standard seals: 0°F to 180°F (-20°C to 80°C); Fire resistant fluids HFB, HFC: 0°F to 150°F (-20°C to 65°C)
Filtration	ISO 4406 code: <ul style="list-style-type: none"> • 19/16 at 2000 psi/140 bar • 17/14 at 3000 psi/210 bar • 15/12 at 4000 psi/275 bar
Direction of rotation (looking at the drive shaft)	CW, CCW, Bi-Rotational
Multiple pump assemblies	Up to 6 gear selections of the same model, even with different gear widths
Separate or common inlet capability	Common

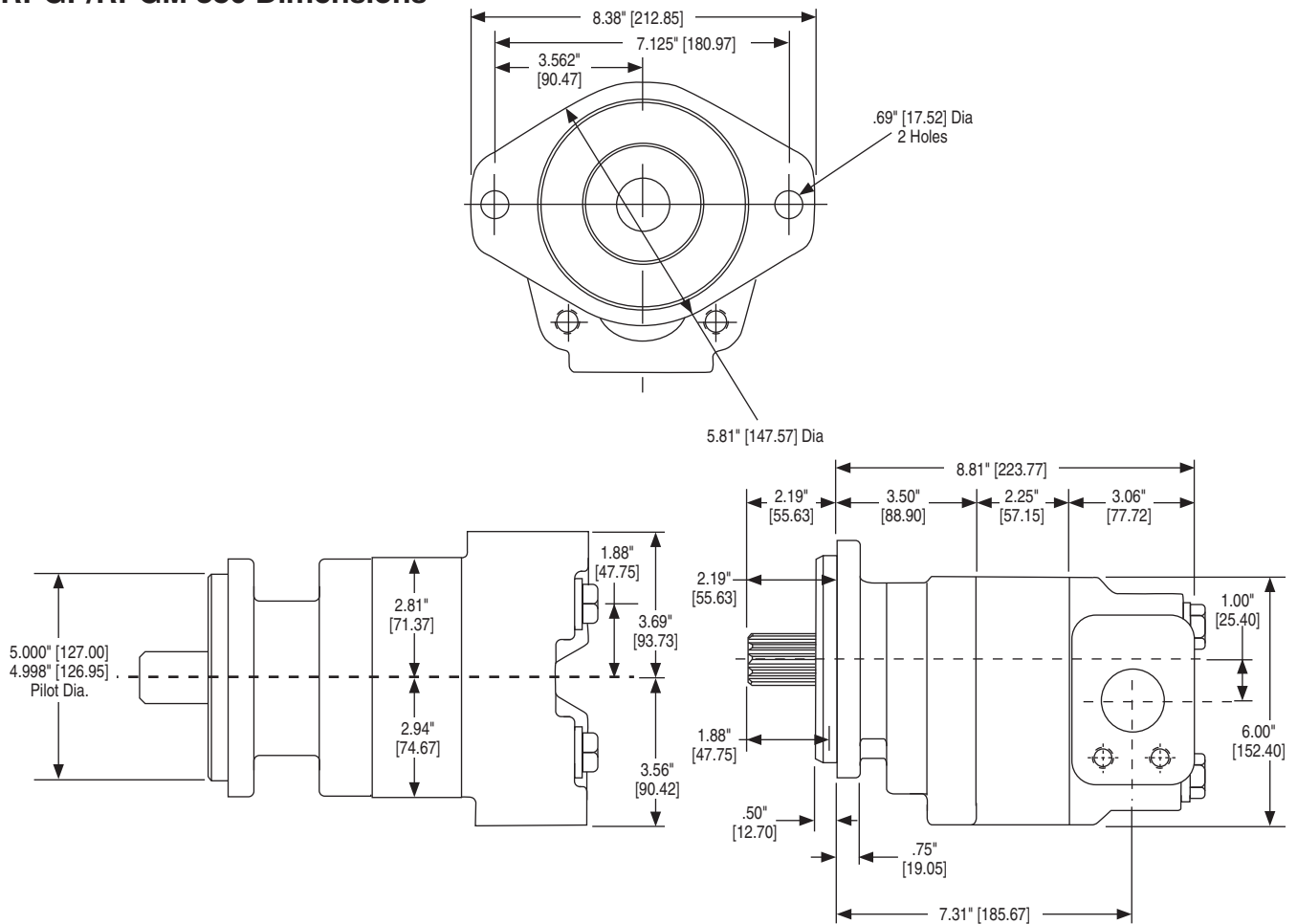
RPGP/RPGM350 Specifications/Dimensions

RPGP/RPGM 300/400 Series Gear Pumps & Motors

RPGP350 Frame Size	05	07	10	12	15	17	20	22	25
Displacement – cm ³ /rev (in ³ /rev)	20.9 (1.28)	31.3 (1.91)	41.8 (2.55)	52.2 (3.19)	62.7 (3.83)	73.1 (4.46)	83.6 (5.10)	94.0 (5.74)	104.5 (6.38)
Max continuous pressure – bar (psi)	241 (3,500)	241 (3,500)	241 (3,500)	241 (3,500)	241 (3,500)	224 (3,250)	207 (3,000)	190 (2,750)	172 (2,500)
Max Speed – RPM	2,400	2,400	2,400	2,400	2,400	2,400	2,400	2,400	2,400
Approximate Weight – Lbs. [kg]	48 [21.8]	49.5 [22.4]	51 [23.1]	52.5 [23.8]	54.0 [24.5]	55.5 [25.2]	57.0 [25.9]	58.5 [26.5]	60.0 [27.2]

RPGM350 Frame Size	05	07	10	12	15	17	20	22	25
Displacement – cm ³ /rev (in ³ /rev)	20.9 (1.28)	31.3 (1.91)	41.8 (2.55)	52.2 (3.19)	62.7 (3.83)	73.1 (4.46)	83.6 (5.10)	94.0 (5.74)	104.5 (6.38)
Max continuous pressure – bar (psi)	241 (3,500)	241 (3,500)	241 (3,500)	241 (3,500)	241 (3,500)	224 (3,250)	207 (3,000)	190 (2,750)	172 (2,500)
Max Speed – RPM	2,400	2,400	2,400	2,400	2,400	2,400	2,400	2,400	2,400
Approximate Weight – Lbs. [kg]	48 [21.8]	49.5 [22.4]	51 [23.1]	52.5 [23.8]	54.0 [24.5]	55.5 [25.2]	57.0 [25.9]	58.5 [26.5]	60.0 [27.2]

RPGP/RPGM 350 Dimensions



RPGP/RPGM350 Performance Data

RPGP350 Pump Performance Data

Speed RPM	Output Flow		Gear Widths								
	Input Power		1/2"	3/4"	1"	1-1/4"	1-1/2"	1-3/4"	2"	2-1/4"	2-1/2"
900	GPM		4.0	6.4	8.8	11.2	13.7	16.1	18.6	21.0	23.4
	LPM		15	24	33	42	52	61	70	79	89
	HP		11	17	22	28	33	36	38	39	40
	kW		8	12	17	21	25	27	28	29	30
1200	GPM		5.6	8.8	12.1	15.4	18.7	21.9	25.2	28.4	31.7
	LPM		21	33	46	58	71	83	95	108	120
	HP		15	22	30	37	44	48	51	52	53
	kW		11	17	22	28	33	36	38	39	39
1500	GPM		7.3	11.3	15.5	19.5	23.6	27.7	31.8	35.9	40.0
	LPM		28	43	59	74	89	105	120	136	151
	HP		18	28	37	46	55	60	63	65	66
	kW		14	21	28	34	41	45	47	49	49
1800	GPM		8.9	13.8	18.8	23.6	28.6	33.5	38.4	43.3	48.3
	LPM		34	52	71	89	108	127	145	164	183
	HP		22	33	44	55	67	72	76	78	79
	kW		17	25	33	41	50	54	57	58	59
2100	GPM		10.6	16.3	22.1	27.8	33.6	39.3	45.1	50.8	56.6
	LPM		40	62	84	105	127	149	171	192	214
	HP		26	39	52	65	78	84	89	91	92
	kW		19	29	39	48	58	63	66	68	69
2400	GPM		12.2	18.8	25.4	31.9	38.5	45.1	51.7	58.2	64.8
	LPM		46	71	96	121	146	171	196	220	245
	HP		30	44	59	74	89	96	101	105	106
	kW		22	33	44	55	66	72	76	78	79

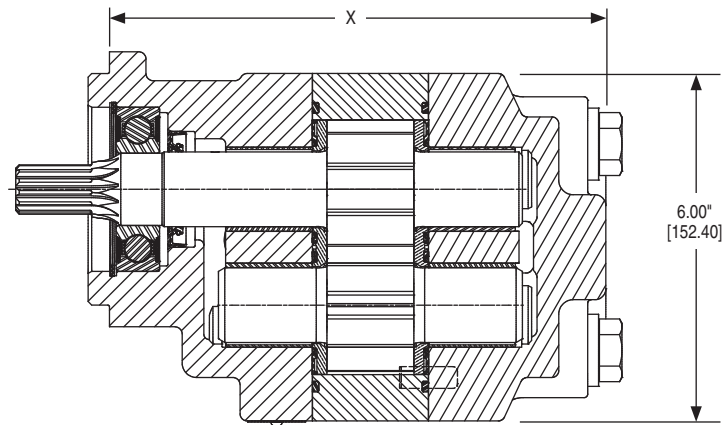
RPGM350 Motor Performance Data

Speed RPM	Output Torque	Gear Widths													
		1" 3500 psi		1-1/4" 3500 psi		1-1/2" 3500 psi		1-3/4" 3250 psi		2" 3000 psi		2-1/4" 2750 psi		2-1/2" 2500 psi	
		A	B	A	B	A	B	A	B	A	B	A	B	A	B
900	in/lbs	13.4	1320	16.0	1670	18.6	2025	21.2	2225	23.8	2350	26.4	2425	28.9	2450
	Nm	51	149.1	61	188.7	70	228.8	80	251.4	90	265.5	100	274.0	110	276.8
1200	in/lbs	16.9	1315	20.4	1660	23.8	2015	27.2	2215	30.6	2340	34.0	2410	37.4	2435
	Nm	64	148.6	77	187.6	90	227.7	103	250.3	116	264.4	129	272.3	142	275.1
1500	in/lbs	20.5	1300	24.7	1640	28.9	1990	33.2	2195	37.4	2315	41.7	2385	45.9	2410
	Nm	77	146.9	93	185.3	110	224.8	126	248.0	142	261.6	158	269.5	174	272.3
1800	in/lbs	24.0	1295	29.0	1635	34.1	1980	39.2	2180	44.2	2300	49.3	2375	54.4	2395
	Nm	91	146.3	110	184.7	129	223.7	148	246.3	167	259.9	187	268.3	206	270.6
2100	in/lbs	27.5	1285	33.4	1620	39.3	1965	45.2	2165	51.1	2285	57.0	2355	62.9	2380
	Nm	104	145.2	126	183.0	149	222.0	171	244.6	193	258.2	216	266.1	238	268.9
2400	in/lbs	31.0	1265	37.7	1600	44.4	1940	51.2	2135	57.9	2255	64.6	2325	71.3	2350
	Nm	117	142.9	143	180.8	168	219.2	194	241.2	219	254.8	245	262.7	270	265.5

A: Input Flow GPM/LPM; B: Output Torque IN/LBS/Nm

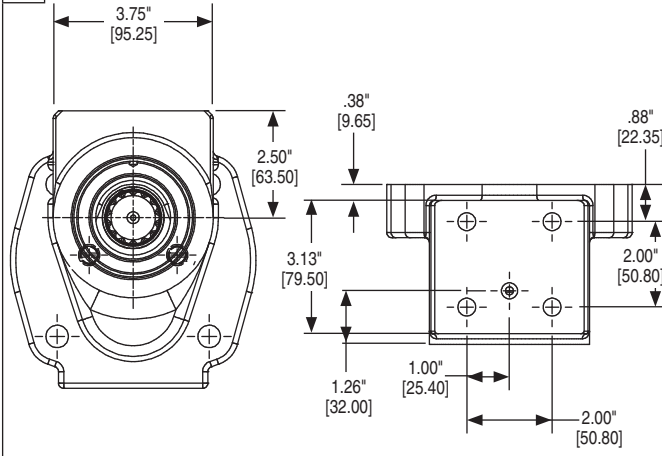
Note: In accordance with our policy of continuing product development, we reserve the right to change specification shown in this catalog without notice.

RPGP/RPGM350 Shaft End Cover

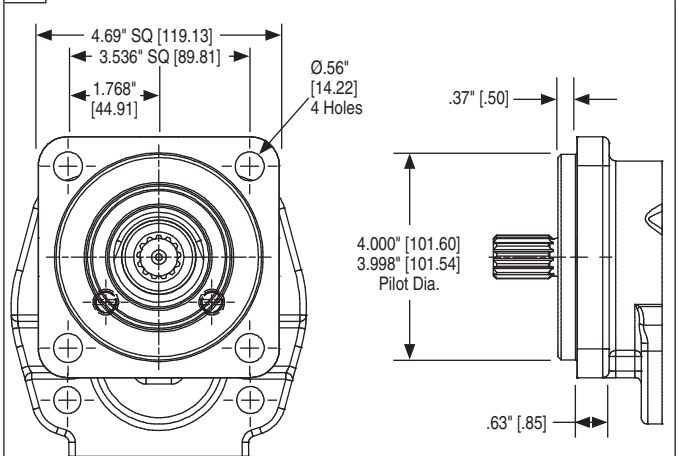


X DIMENSION								
SEC CODE	07	10	12	15	17	20	22	25
00	8.06" [204.72]	8.31" [211.07]	8.56" [217.42]	8.81" [223.77]	9.06" [230.12]	9.31" [236.47]	9.56" [242.82]	9.81" [249.17]
42	7.81" [198.37]	8.06" [204.72]	8.31" [211.07]	8.56" [217.42]	8.81" [223.77]	9.06" [230.12]	9.31" [236.47]	9.56" [242.82]
46	7.81" [198.37]	8.06" [204.72]	8.31" [211.07]	8.56" [217.42]	8.81" [223.77]	9.06" [230.12]	9.31" [236.47]	9.56" [242.82]
78	7.81" [198.37]	8.06" [204.72]	8.31" [211.07]	8.56" [217.42]	8.81" [223.77]	9.06" [230.12]	9.31" [236.47]	9.56" [242.82]
97	7.81" [198.37]	8.06" [204.72]	8.31" [211.07]	8.56" [217.42]	8.81" [223.77]	9.06" [230.12]	9.31" [236.47]	9.56" [242.82]

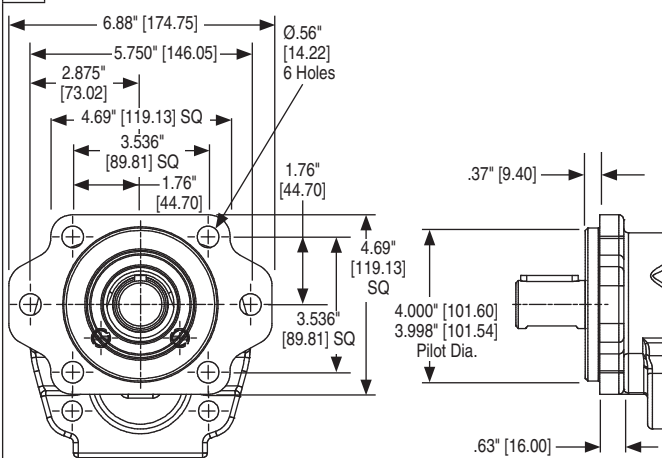
00 Pad Mount



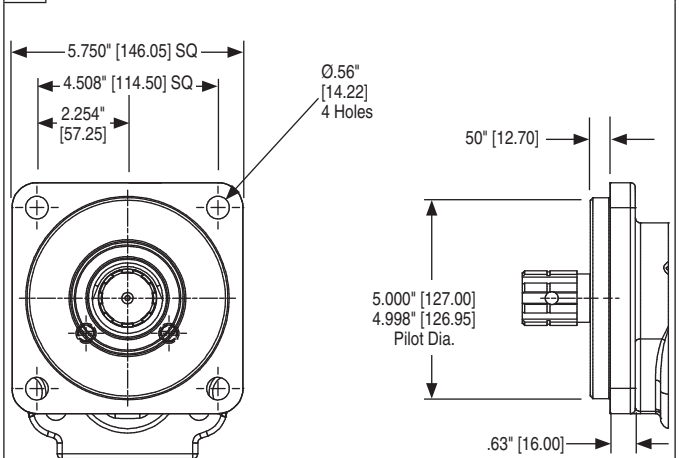
42 SAE B 4-Bolt



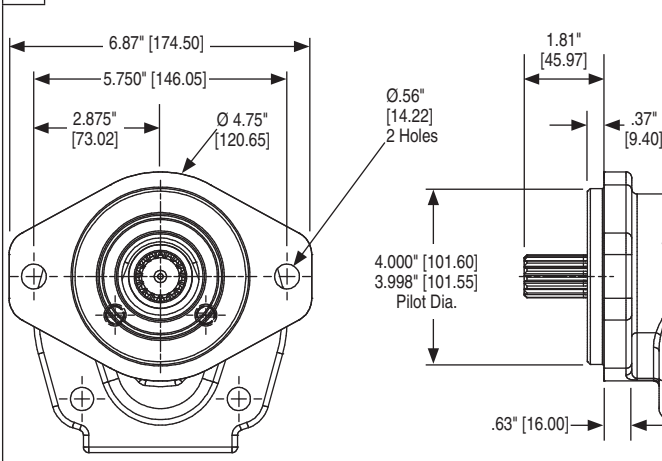
46 SAE B 2/4-Bolt



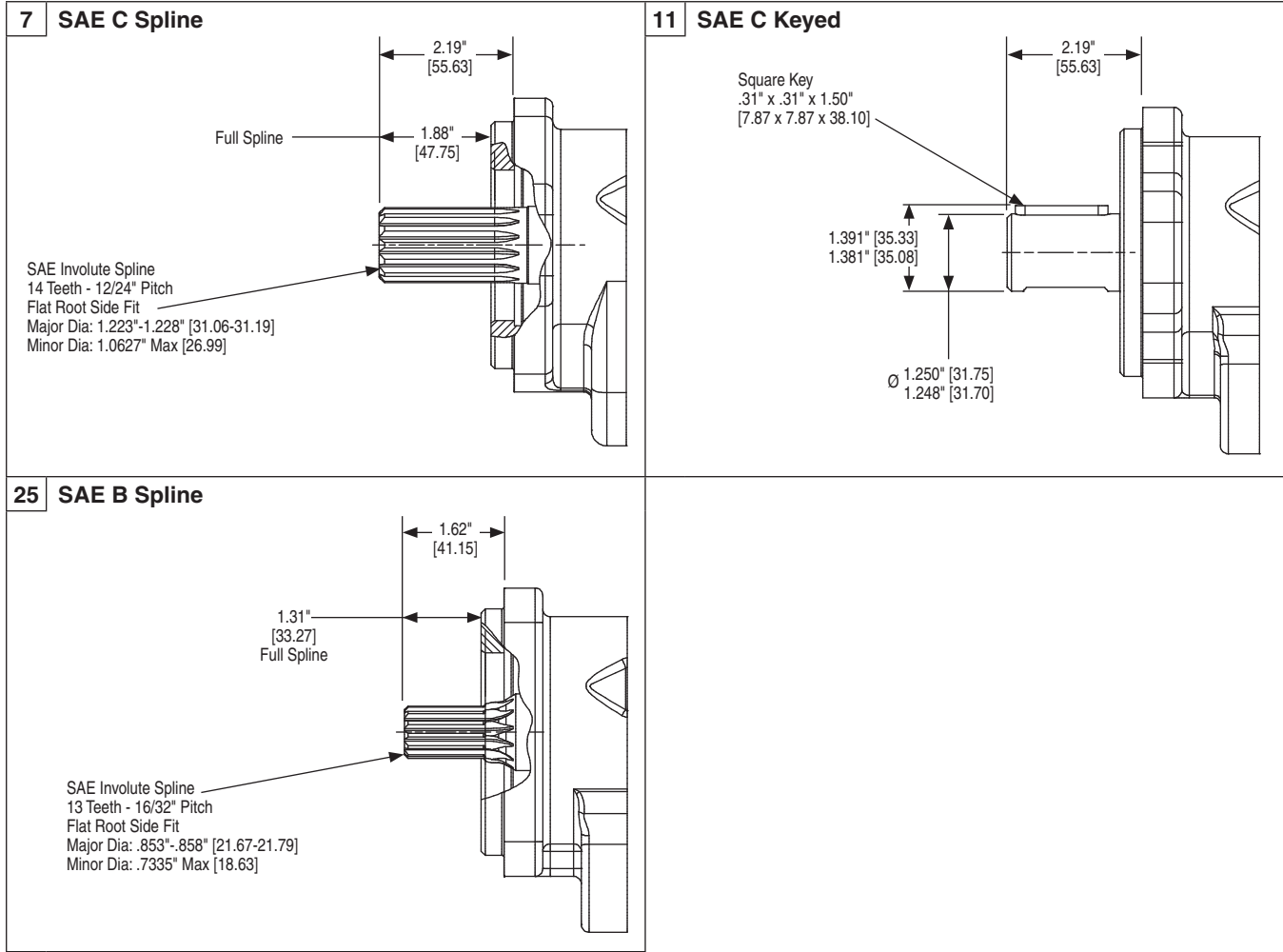
78 SAE C 4-Bolt

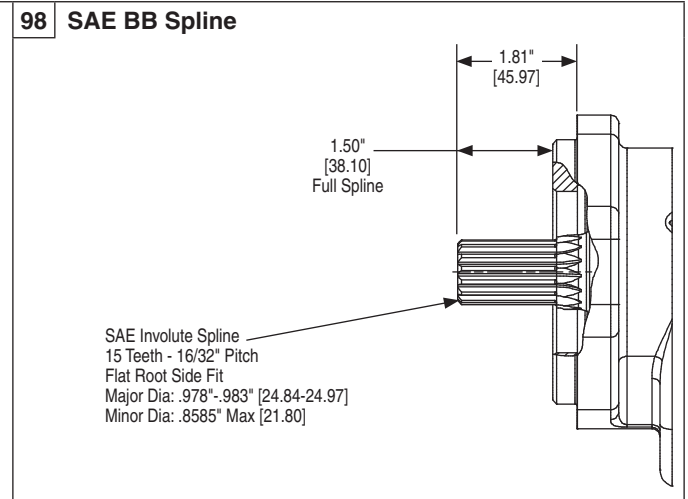
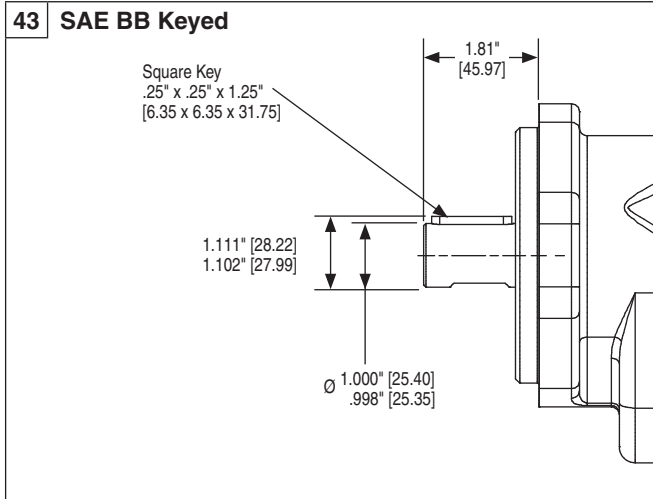


97 SAE B 2-Bolt



RPGP/RPGM350 Drive Shafts





Shaft Style		Integral: 1 2 pieces: 2	Maximum Torque	
			lb-ft	Nm
SAE B	Splined - 13 Teeth	1	242	328
		2	242	328
SAE BB	Splined - 15 Teeth	1	371	503
		2	300	407
SAE C	Splined - 14 Teeth	1	708	960
		2	300	407
	1.25" Keyed	1	500	678
		2	300	407
Connecting Shaft			300	407

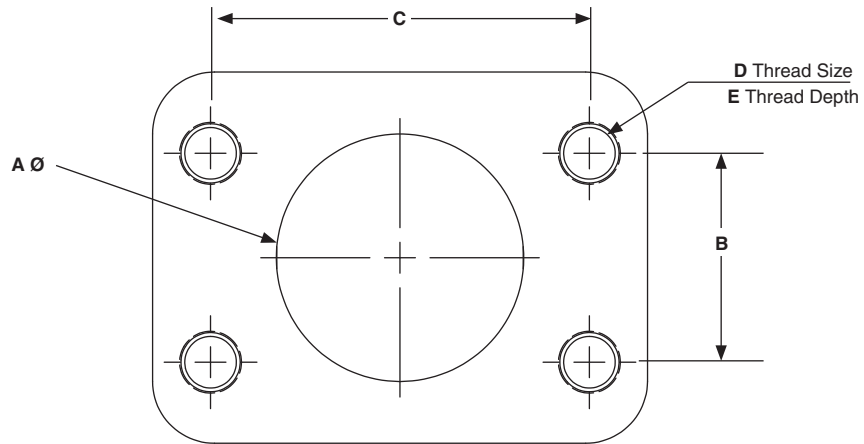
Torque (lb-ft) = $\frac{\text{Pressure (PSI)} \times \text{Displacement (in}^3\text{/rev)}}{75.4}$

Torque (Nm) = $\frac{\text{Pressure (Bar)} \times \text{Displacement (cc/rev)}}{62.8}$

RPGP/RPGM350 Port Options

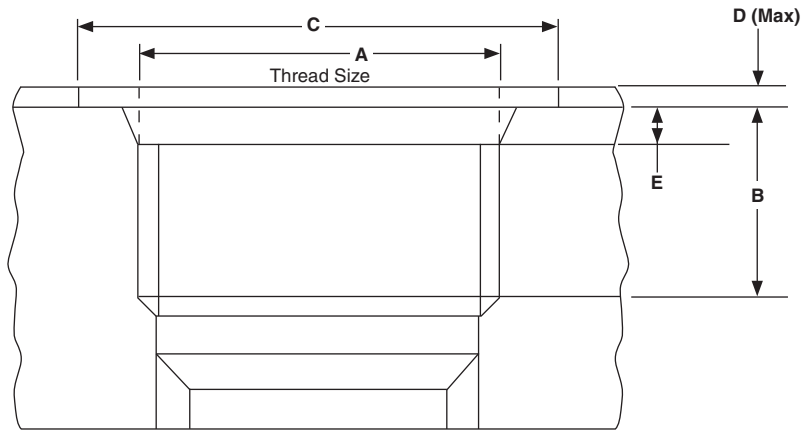
SAE Flanged Ports UNC Thread (SSS)

A		B		C		D	E	
inch	mm	inch	mm	inch	mm	UNC	inch	mm
0.50	12.7	0.69	17.5	1.50	38.1	5/16"-18	0.94	23.9
0.75	19.1	0.88	22.3	1.88	47.7	3/8"-16	0.88	22.4
1.00	25.4	1.03	26.2	2.06	52.2	3/8"-16	0.88	22.4
1.25	31.8	1.19	30.2	2.31	58.7	7/16"-14	1.12	28.4
1.50	38.1	1.41	35.7	2.75	69.9	1/2"-13	1.06	26.9
2.00	50.8	1.69	42.9	3.06	77.8	1/2"-13	1.06	26.9
2.50	63.5	2.00	50.8	3.50	88.9	1/2"-13	1.19	30.2



SAE Straight Thread (ODT)

ODT	A UNF	B		C		D		E	
		inch	mm	inch	mm	inch	mm	inch	mm
1/2"	3/4"-16	.56	14.3	1.19	30.2	.09	2.4	.10	2.55
5/8"	7/8"-14	.66	16.7	1.34	34.1	.09	2.4	.10	2.55
3/4"	1-1/16"-12	.75	19.1	1.62	41.3	.09	2.4	.13	3.30
1"	1-5/16"-12	.75	19.1	1.91	48.5	.09	2.4	.13	3.30
1-1/4"	1-5/8"-12	.75	19.1	2.27	57.7	.09	2.4	.13	3.35
1-1/2"	1-7/8"-12	.75	19.1	2.56	65.0	.09	2.4	.13	3.35
2"	2-1/2"-12	.75	19.1	3.48	88.4	.09	2.4	.13	3.35



RPGP/RPGM350 Ordering Code

Tandem: Repeat if Necessary

RPG 1 350 2 3 3 4 4 5 5 6 6 7 7 8 8 9 9 6 6 7 7 10

Code	1 – Type
P	Pump
M	Motor

Code	2 – Unit
A	Single Unit
B	Tandem Unit (flush studs)
C	Single or Tandem with two-piece shaft (O.B. bearing required)
L	Unit with Extended Studs

Code	3 – Shaft End Cover
1	Pump, cw w/o O.B. bearing
2	Pump, ccw w/o O.B. bearing
4	Pump, cw with O.B. bearing
5	Pump, ccw with O.B. bearing
8	Motor, bi-rot with O.B. bearing + 1/4" ODT drain
9	Motor, bi-rot w/o O.B. bearing + 1/4" ODT drain
18	Motor, bi-rot with O.B. bearing + 1/4" BSPP drain (78 only)
19	Motor, bi-rot w/o O.B. bearing + 1/4" BSPP drain (42 & 78 only)

Code	4 – Shaft End Cover
00	Clutch Shaft
42	SAE B 4-Bolt
46	SAE B 2/4-Bolt
78	SAE C 4-Bolt
97	SAE B 2-Bolt
98	SAE C 2-Bolt

Code	5 – Port End Cover			
SIDE PORTED				
	CW	CCW	IN	OUT
SAE Split Flange (pump)				
EC	CE	2"	1-1/2"	
EF	FE	2"	1-1/4"	
EG	GE	2"	1"	
EH	HE	1-1/2"	1-1/2"	
EJ	JE	1-1/2"	1-1/4"	
EK	KE	1-1/2"	1"	
EL	LE	1-1/4"	1-1/4"	
EM	ME	1-1/4"	1"	
EN	NE	1"	1"	
OE	EO	2"	-	
OF	FO	1-1/2"	-	
OG	GO	1-1/4"	-	
OJ	JO	1"	-	
OL	LO	-	1-1/2"	
OM	MO	-	1-1/4"	
ON	NO	-	1"	
SAE Split Flange (motor)				
CR-Double		1-1/2"	1-1/2"	
CS-Double		1-1/4"	1-1/4"	
CT-Double		1"	1"	
CV-Double		3/4"	3/4"	
OD Tube Porting (pump)				
FB	BF	1-1/2"	1-1/4"	
FC	CF	1-1/2"	1"	
FG	GF	1-1/4"	1-1/4"	
FJ	JF	1-1/4"	1"	
FL	LF	1"	1"	
BC	CB	1-1/2"	-	
BG	GB	1-1/4"	-	
BJ	JB	1"	-	
BL	LB	-	1-1/4"	
BN	NB	-	1"	
OD Tube Porting (motor)				
VC-Double		1-1/4"	1-1/4"	
VN-Double		1"	1"	
VR-Double		3/4"	3/4"	
Unported (pump)				
BI	IB	Unported		
Unported (motor)				
BA		Unported		

Code	6 – Gear Housing
AB	Pump
EB	Motor

Code	7 – Gear Width				
	Gear Width	in. ³ /rev.	cm ³ /rev.	Max Pressure	
				psi	bar
05	1/2"	1.28	20.9	3500	241
07	3/4"	1.91	31.3	3500	241
10	1"	2.55	41.8	3500	241
12	1-1/4"	3.19	52.2	3500	241
15	1-1/2"	3.83	62.7	3500	241
17	1-3/4"	4.46	73.1	3250	224
20	2"	5.10	83.6	3000	207
22	2-1/4"	5.74	94.0	2750	190
25	2-1/2"	6.38	104.5	2500	172

Code	8 – Shaft Type
7	SAE C Spline
11	SAE C Keyed
25	SAE B Spline
43	SAE BB Keyed
98	SAE BB Splined

For Single or Tandem Units - unless noted

RPGP/RPGM350 Ordering Code (cont.)

RPGP/RPGM 300/400 Series Gear Pumps & Motors

Tandem: Repeat if Necessary

RPG	1	350	2	3	3	4	4	5	5	6	6	7	7	8	8	9	9	6	6	7	7	10
-----	---	-----	---	---	---	---	---	---	---	---	---	---	---	---	---	---	---	---	---	---	---	----

Code	9 – Bearing Carriers			
DUAL OUTLET - PUMP ONLY				
Outlets: for clockwise porting the top port number comes first; for counter-clockwise porting the bottom port number comes first				
CW	CCW	IN	OUT	
SAE Split Flange				
AF	FA	2-1/2"	1-1/4"	1-1/4"
AG	GA	2-1/2"	1-1/4"	1"
AH	HA	2-1/2"	1"	1"
AM	MA	2"	1-1/4"	1-1/4"
AN	NA	2"	1-1/4"	1"
AP	PA	2"	1"	1"
AT	TA	1-1/2"	1-1/4"	1-1/4"
AU	UA	1-1/2"	1-1/4"	1"
AV	VA	1-1/2"	1"	1"
AW	WA	1-1/4"	1-1/4"	1-1/4"
AX	XA	1-1/4"	1-1/4"	1"
AY	YA	1-1/4"	1"	1"
AZ	ZA	1"	1"	1"
OD Tube Porting				
GM	MG	2"	1-1/4"	1-1/4"
GN	NG	2"	1-1/4"	1"
GP	PG	2"	1"	1"
GT	TG	1-1/2"	1-1/4"	1-1/4"
GU	UG	1-1/2"	1-1/4"	1"
GV	VG	1-1/2"	1"	1"
GW	WG	1-1/4"	1-1/4"	1-1/4"
GX	XG	1-1/4"	1-1/4"	1"
GY	YG	1-1/4"	1"	1"
GZ	ZG	1"	1"	1"

* Outlet port for rear section

Code	9 – Bearing Carriers (cont.)			
SINGLE OUTLET - PUMP ONLY				
Outlet for front section				
CW	CCW	IN	OUT	
SAE Split Flange				
HB	BH	2"	1-1/2"	
HC	CH	2"	1-1/4"	
HF	FH	2"	1"	
HL	LH	1-1/2"	1-1/2"	
HM	MH	1-1/2"	1-1/4"	
HN	NH	1-1/2"	1"	
HO	OH	1-1/4"	1-1/4"	
HP	PH	1-1/4"	1"	
HQ	QH	* 1"	1"	
RS	SR	1-1/4"	1"	
OD Tube Porting				
KB	BK	2"	1-1/2"	
KC	CK	2"	1-1/4"	
KF	FK	2"	1"	
KL	LK	1-1/2"	1-1/2"	
KM	MK	1-1/2"	1-1/4"	
KN	NK	1-1/2"	1"	
KO	OK	1-1/4"	1-1/4"	
KP	PK	1-1/4"	1"	
KQ	QK	1"	1"	
* Outlet port for rear section				

Code	9 – Bearing Carriers (cont.)			
COMBINED OUTLET				
Outlet for front section				
CW	CCW	IN	OUT	
SAE Split Flange (pump)				
UN	NU	2"	1-1/2"	
UO	OU	2"	1-1/4"	
UP	PU	1-1/2"	1-1/2"	
UQ	QU	1-1/2"	1-1/4"	
UR	RU	1-1/4"	1-1/4"	
SAE Split Flange (motor)				
AA-Double		2"	2"	
BB-Double		1-1/2"	1-1/2"	
CC-Double		1-1/4"	1-1/4"	
EE-Double		1"	1"	
FF-Double		3/4"	3/4"	
OD Tube Porting (pump)				
PE	EP	2"	1-1/2"	
PM	MP	2"	1-1/4"	
PN	NP	1-1/2"	1-1/2"	
PQ	QP	1-1/2"	1-1/4"	
PR	RP	1-1/4"	1-1/4"	
OD Tube Porting (motor)				
MM-Double		1-1/2"	1-1/2"	
NN-Double		1-1/4"	1-1/4"	
QQ-Double		1"	1"	
RR-Double		3/4"	3/4"	
Common Inlet Passage				
C	D	No Ports		

Code	10 – Connecting Shaft
1	Connecting Shaft
For connecting tandem units	

RPGP/RPGM365 Characteristics

- **Three-piece cast iron construction**
High efficiency and long life in severe operating environments.
- **Low friction bushing**
Provides strength in heavy duty applications.
- **Balanced thrust plates**
Optimize pump efficiency.
- **Largest journal bearings available**
for high pressure and long life.



Product Features	Description
Pump Type	Heavy Duty, Cast Iron, External Gear
Mounting	SAE Standard Flanges
Ports	SAE Split Flanges and other types of Threaded Ports, See Specifications
Shaft Style	SAE Splined, Keyed, and others, See Specifications
Maximum Speed	2400 RPM
Theor. displacement	See Specifications
Drive	CW, CCW, Double
Inlet pressure	15psig Max Press / 5inHg Max Vac
Outlet pressure	See Specifications
Hydraulic fluids	Mineral Oil, Water-Oil Emulsions 60/40HFB, Water-glycol, HFC, Phosphate-esters, HFD
Fluid viscosity	50 to 7500 SUS; Recommended 80 to 350 SUS
Port Connection	Flange/Straight Threaded

Product Features	Description
Fluid temperature	Mineral oil with standard seals: 0° to 180°F (-20°C to +80°C) Fire resistant fluids HFB, HFC 0° to 150°F (-20°C to +65°C)
Filtration	According to ISO 4406 code: • 20/18/15 at 2000 psi/140 bar • 19/17/14 at 3000 psi/210 bar • 17/15/12 at 4000 psi/275 bar
Direction of rotation (looking at the drive shaft)	CW, CCW, Bi-Rotational
Multiple pump assemblies	Single, Multiple, Piggyback, Thru-Drive
Separate or common inlet capability	Common

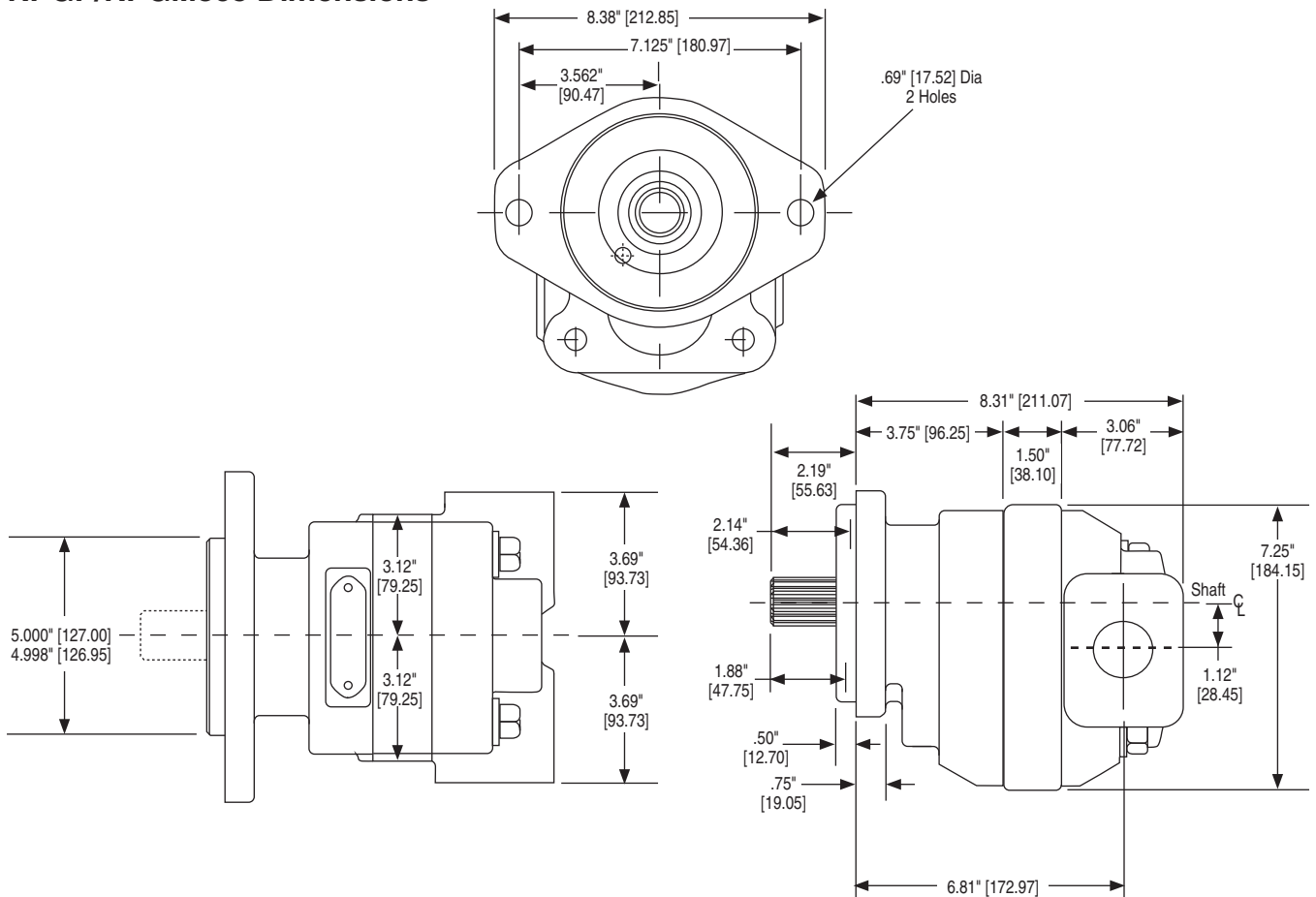
RPGP/RPGM365 Specifications/Dimensions

RPGP/RPGM 300/400 Series Gear Pumps & Motors

RPGP365 Frame Size	07	10	12	15	17	20	22	25
Displacement – cm ³ /rev (in ³ /rev)	44.3 (2.70)	59.0 (3.60)	73.8 (4.50)	88.5 (5.40)	103.3 (6.30)	118.0 (7.20)	132.8 (8.10)	147.5 (9.00)
Max continuous pressure – bar (psi)	241 (3,500)	241 (3,500)	241 (3,500)	241 (3,500)	241 (3,500)	241 (3,500)	224 (3,250)	207 (3,000)
Max Speed – RPM	2,400	2,400	2,400	2,400	2,400	2,400	2,400	2,400
Approximate Weight – Lbs. [kg]	53.5 [24.3]	56 [25.4]	58.5 [26.5]	61.0 [27.7]	63.5 [28.8]	66.0 [30]	68.5 [31.1]	71.0 [32.2]

RPGM365 Frame Size	07	10	12	15	17	20	22	25
Displacement – cm ³ /rev (in ³ /rev)	44.3 (2.70)	59.0 (3.60)	73.8 (4.50)	88.5 (5.40)	103.3 (6.30)	118.0 (7.20)	132.8 (8.10)	147.5 (9.00)
Max continuous pressure – bar (psi)	241 (3,500)	241 (3,500)	241 (3,500)	241 (3,500)	241 (3,500)	241 (3,500)	224 (3,250)	207 (3,000)
Max Speed – RPM	2,400	2,400	2,400	2,400	2,400	2,400	2,400	2,400
Approximate Weight – Lbs. [kg]	53.5 [24.3]	56 [25.4]	58.5 [26.5]	61.0 [27.7]	63.5 [28.8]	66.0 [30]	68.5 [31.1]	71.0 [32.2]

RPGP/RPGM365 Dimensions



RPGP/RPGM365 Performance Data

RPGP365 Pump Performance Data

Speed RPM	Output Flow Input Power	Gear Widths							
		3/4"	1"	1-1/4"	1-1/2"	1-3/4"	2"	2-1/4"	2-1/2"
900	GPM	8.0	11.5	14.9	18.4	21.8	25.4	28.8	32.3
	LPM	30	44	57	70	83	96	109	122
	HP	24	31	39	47	55	63	66	67
	kW	18	23	29	35	41	47	49	50
1200	GPM	11.5	16.2	20.8	25.5	30.0	34.7	39.3	44.0
	LPM	44	61	79	96	114	131	149	166
	HP	31	42	52	63	73	84	88	90
	kW	23	31	39	47	55	63	65	67
1500	GPM	15.0	20.9	26.6	32.5	38.2	44.1	49.8	55.6
	LPM	57	79	101	123	145	167	188	211
	HP	39	52	66	79	92	105	110	112
	kW	29	39	49	59	68	78	82	84
1800	GPM	18.5	25.6	32.5	39.5	46.4	53.4	60.3	67.3
	LPM	70	97	123	149	176	202	228	255
	HP	47	63	79	94	110	126	131	135
	kW	35	47	59	70	82	94	98	101
2100	GPM	22.0	30.2	38.3	46.5	54.6	62.8	70.8	79.0
	LPM	83	114	145	176	207	238	268	299
	HP	55	73	92	110	128	147	153	157
	kW	41	55	68	82	96	110	114	117
2400	GPM	25.6	34.9	44.2	53.5	62.8	72.1	81.4	90.7
	LPM	97	132	167	203	238	273	308	343
	HP	63	84	105	126	147	168	175	180
	kW	47	63	78	94	110	125	131	134

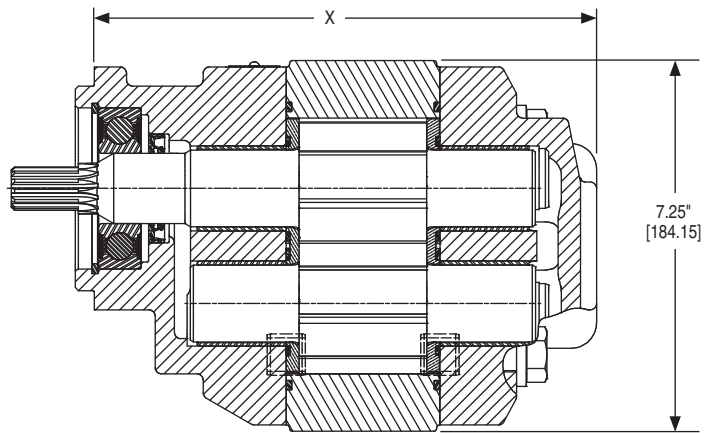
RPGM365 Motor Performance Data

Speed RPM	Output Torque	Gear Widths													
		1" 3500 psi		1-1/4" 3500 psi		1-1/2" 3500 psi		1-3/4" 3500 psi		2" 3500 psi		2-1/4" 3250 psi		2-1/2" 3000 psi	
		A	B	A	B	A	B	A	B	A	B	A	B	A	B
900	in/lbs	18.4	1865	22.0	2355	25.6	2860	29.2	3370	32.9	3850	36.5	4020	40.1	4125
	Nm	70	210.7	83	266.1	97	323.1	111	380.8	124	435.0	138	454.2	152	466.1
1200	in/lbs	23.3	1845	28.1	2330	32.9	2830	37.6	3335	42.4	3810	47.2	3980	52.0	4080
	Nm	88	208.5	106	263.3	124	319.7	142	376.8	160	430.5	179	449.7	197	461.0
1500	in/lbs	28.2	1815	34.1	2295	40.1	2780	46.0	3280	52.0	3750	57.9	3915	63.8	4020
	Nm	107	205.1	129	259.3	152	314.1	174	370.6	197	423.7	219	442.3	242	454.2
1800	in/lbs	33.1	1805	40.2	2280	47.3	2765	54.4	3265	61.5	3730	68.6	3895	75.7	3995
	Nm	125	203.9	152	257.6	179	312.4	206	368.9	233	421.4	260	440.1	287	451.4
2100	in/lbs	37.9	1755	46.2	2220	54.4	2690	62.8	3160	71.1	3610	79.3	3770	87.6	3865
	Nm	144	198.3	175	250.8	206	303.9	238	357.0	269	407.9	300	426.0	332	436.7
2400	in/lbs	42.8	1705	52.3	2155	61.7	2615	71.2	3055	80.6	3490	90.1	3645	99.5	3740
	Nm	162	192.6	198	243.5	234	295.5	269	345.2	305	394.3	341	411.8	377	422.6

A: Input Flow GPM/LPM; B: Output Torque IN/LBS/Nm

Note: In accordance with our policy of continuing product development, we reserve the right to change specifications shown in this catalog without notice.

RPGP/RPGM365 Shaft End Cover

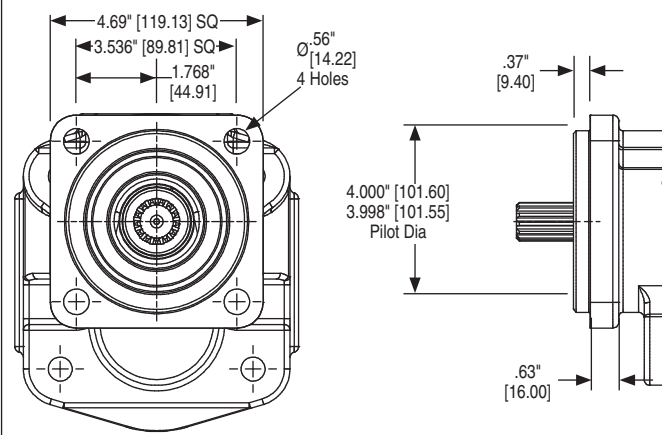


X DIMENSION								
SEC CODE	07	10	12	15	17	20	22	25
42	8.06" [204.72]	8.31" [211.07]	8.56" [217.42]	8.81" [223.77]	9.06" [230.12]	9.31" [236.47]	9.56" [242.82]	9.81" [249.17]
78	8.06" [204.72]	8.31" [211.07]	8.56" [217.42]	8.81" [223.77]	9.06" [230.12]	9.31" [236.47]	9.56" [242.82]	9.81" [249.17]
97	8.06" [204.72]	8.31" [211.07]	8.56" [217.42]	8.81" [223.77]	9.06" [230.12]	9.31" [236.47]	9.56" [242.82]	9.81" [249.17]
98	8.06" [204.72]	8.31" [211.07]	8.56" [217.42]	8.81" [223.77]	9.06" [230.12]	9.31" [236.47]	9.56" [242.82]	9.81" [249.17]

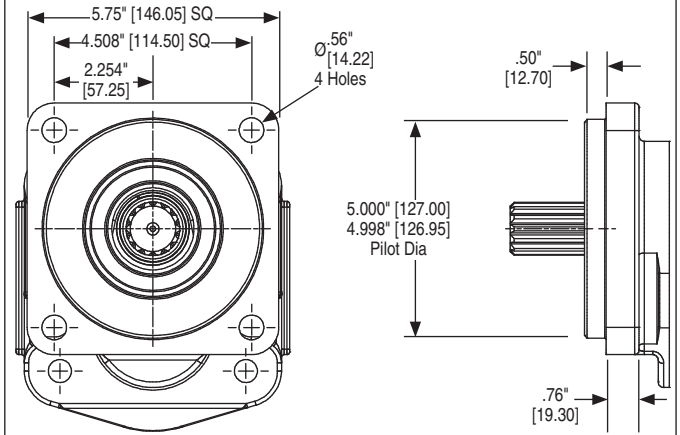
RPGP/RPGM365 Shaft End Cover (cont.)

RPGP/RPGM 300/400 Series Gear Pumps & Motors

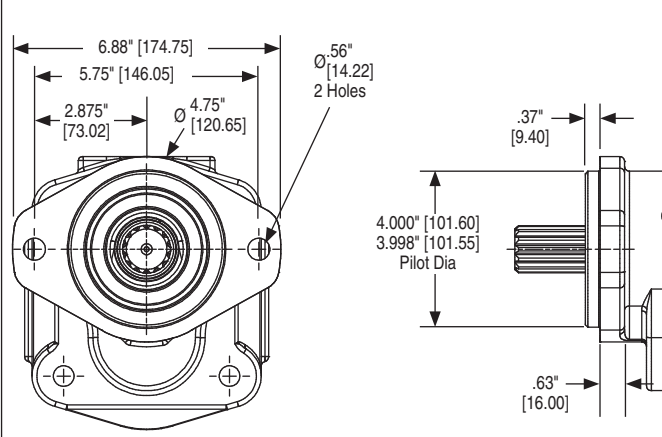
42 SAE B 4-Bolt



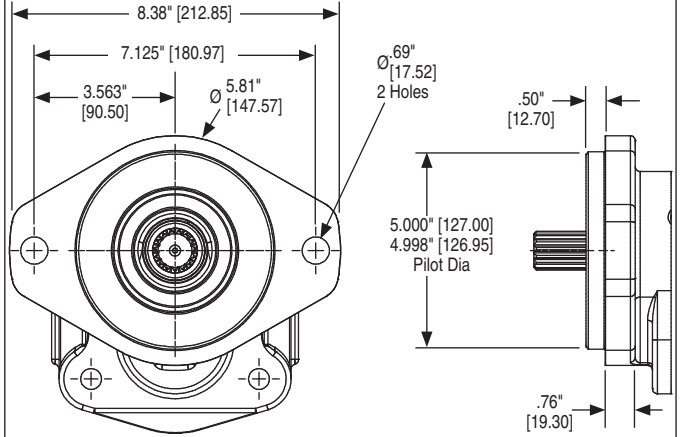
78 SAE C 4-Bolt



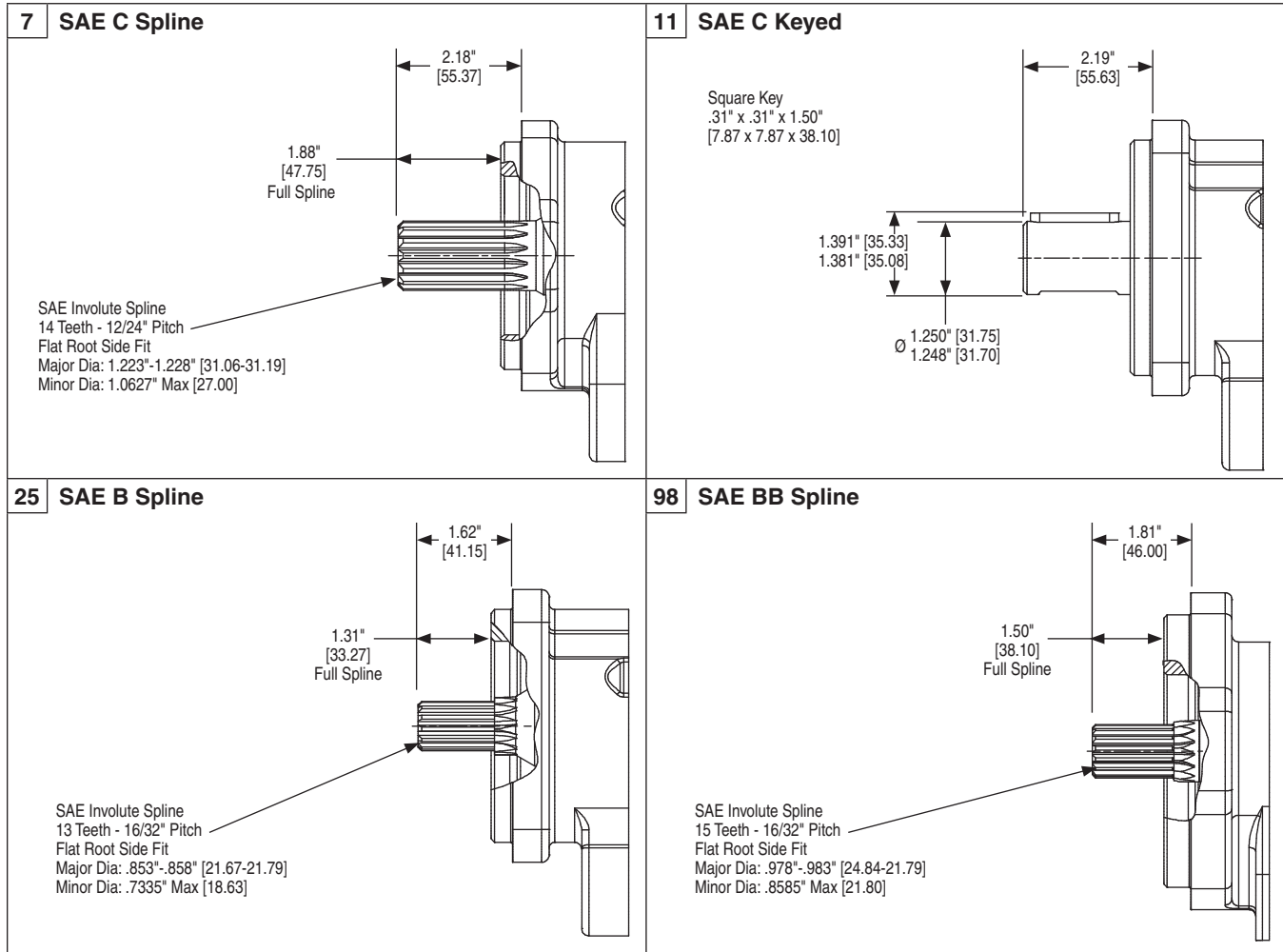
97 SAE B 2-Bolt



98 SAE C 2-Bolt



RPGP/RPGM365 Drive Shafts



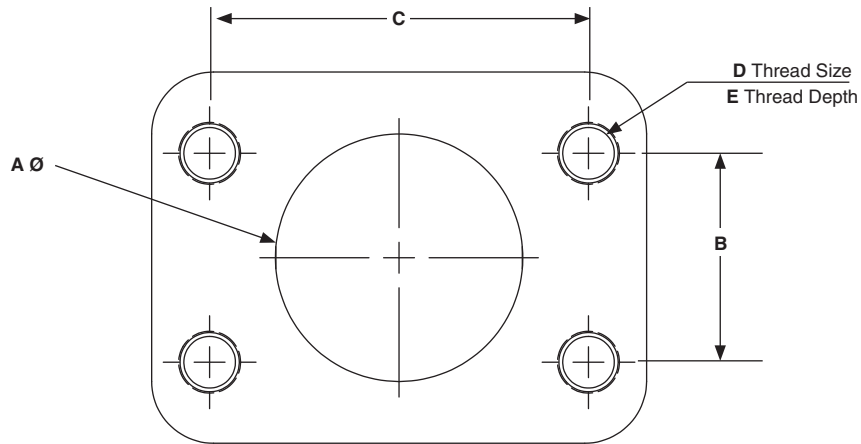
Shaft Style		Integral: 1 2 pieces: 2	Maximum Torque	
			lb-ft	Nm
SAE B	Splined - 13 Teeth	1	242	328
	7/8" Keyed	2	242	328
SAE BB	Splined - 15 Teeth	1	167	226
	1" Keyed	2	167	226
SAE C	Splined - 14 Teeth	1	371	503
	1.25" Keyed	2	371	503
Connecting Shaft			250	339
			500	678
			500	678
			533	723

Torque (lb-ft) = $\frac{\text{Pressure (PSI)} \times \text{Displacement (in}^3\text{/rev)}}{75.4}$

Torque (Nm) = $\frac{\text{Pressure (Bar)} \times \text{Displacement (cc/rev)}}{62.8}$

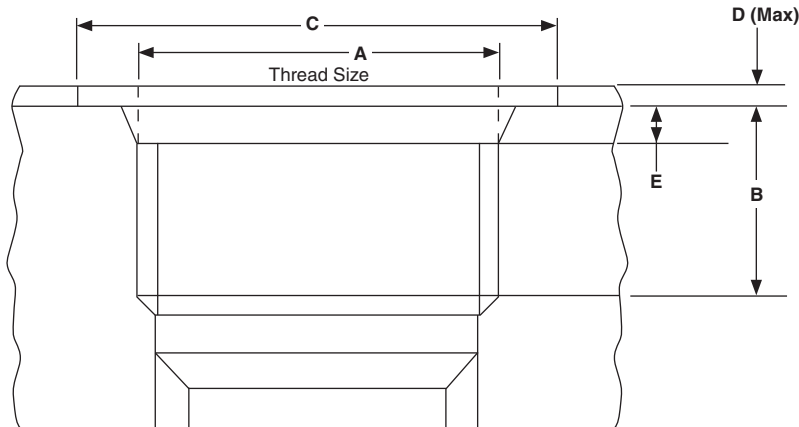
SAE Flanged Ports UNC Thread (SSS)

A		B		C		D	E	
inch	mm	inch	mm	inch	mm	UNC	inch	mm
0.50	12.7	0.69	17.5	1.50	38.1	5/16"-18	0.94	23.9
0.75	19.1	0.88	22.3	1.88	47.7	3/8"-16	0.88	22.4
1.00	25.4	1.03	26.2	2.06	52.2	3/8"-16	0.88	22.4
1.25	31.8	1.19	30.2	2.31	58.7	7/16"-14	1.12	28.4
1.50	38.1	1.41	35.7	2.75	69.9	1/2"-13	1.06	26.9
2.00	50.8	1.69	42.9	3.06	77.8	1/2"-13	1.06	26.9
2.50	63.5	2.00	50.8	3.50	88.9	1/2"-13	1.19	30.2



SAE Straight Thread (ODT)

ODT	A UNF	B		C		D		E	
		inch	mm	inch	mm	inch	mm	inch	mm
1/2"	3/4"-16	.56	14.3	1.19	30.2	.09	2.4	.10	2.55
5/8"	7/8"-14	.66	16.7	1.34	34.1	.09	2.4	.10	2.55
3/4"	1-1/16"-12	.75	19.1	1.62	41.3	.09	2.4	.13	3.30
1"	1-5/16"-12	.75	19.1	1.91	48.5	.09	2.4	.13	3.30
1-1/4"	1-5/8"-12	.75	19.1	2.27	57.7	.09	2.4	.13	3.35
1-1/2"	1-7/8"-12	.75	19.1	2.56	65.0	.09	2.4	.13	3.35
2"	2-1/2"-12	.75	19.1	3.48	88.4	.09	2.4	.13	3.35



RPGP/RPGM365 Ordering Code

Tandem: Repeat if Necessary

RPG 1 365 2 3 3 4 4 5 5 6 6 7 7 8 8 9 9 6 6 7 7 10

Code	1 – Type
P	Pump
M	Motor

Code	2 – Unit
A	Single Unit
B	Tandem Unit (flush studs)
C	Single or Tandem with two-piece shaft (O.B. bearing required)
L	Unit with Extended Studs

Code	3 – Shaft End Cover
1	Pump, cw w/o O.B. bearing
2	Pump, ccw w/o O.B. bearing
4	Pump, cw with O.B. bearing
5	Pump, ccw with O.B. bearing
8	Motor, bi-rot with O.B. bearing + 1/4" ODT drain
9	Motor, bi-rot w/o O.B. bearing + 1/4" ODT drain

Code	4 – Shaft End Cover
42	SAE B 4-Bolt
78	SAE C 4-Bolt
97	SAE B 2-Bolt
98	SAE C 2-Bolt

Code	5 – Port End Cover		
SIDE PORTED			
	CW	CCW	IN OUT
SAE Split Flange (pump)			
EC	CE	2"	1-1/2"
EF	FE	2"	1-1/4"
EG	GE	2"	1"
EH	HE	1-1/2"	1-1/2"
EJ	JE	1-1/2"	1-1/4"
EK	KE	1-1/2"	1"
EL	LE	1-1/4"	1-1/4"
EM	ME	1-1/4"	1"
EN	NE	1"	1"
OE	EO	2"	-
OF	FO	1-1/2"	-
OG	GO	1-1/4"	-
OJ	JO	1"	-
OL	LO	-	1-1/2"
OM	MO	-	1-1/4"
ON	NO	-	1"
SAE Split Flange (motor)			
CR-Double		1-1/2"	1-1/2"
CS-Double		1-1/4"	1-1/4"
CT-Double		1"	1"
CV-Double		3/4"	3/4"
OD Tube Porting (pump)			
FB	BF	1-1/2"	1-1/4"
FC	CF	1-1/2"	1"
FG	GF	1-1/4"	1-1/4"
FJ	JF	1-1/4"	1"
FL	LF	1"	1"
BC	CB	1-1/2"	-
BG	GB	1-1/4"	-
BJ	JB	1"	-
BL	LB	-	1-1/4"
BN	NB	-	1"
OD Tube Porting (motor)			
VC-Double		1-1/4"	1-1/4"
VN-Double		1"	1"
VR-Double		3/4"	3/4"
Unported (pump)			
BI	IB	Unported	
Unported (motor)			
BA		Unported	

Code	6 – Gear Housing
AB	Pump
EB	Motor

Code	7 – Gear Width				
	Gear Width	in. ³ /rev.	cm ³ /rev.	Max Pressure	
				psi	bar
07	3/4"	2.70	44.3	3500	241
10	1"	3.60	59.0	3500	241
12	1-1/4"	4.50	73.8	3500	241
15	1-1/2"	5.40	88.5	3500	241
17	1-3/4"	6.30	103.3	3500	241
20	2"	7.20	118.0	3500	241
22	2-1/4"	8.10	132.8	3250	224
25	2-1/2"	9.00	147.5	3000	207

Code	8 – Shaft Type
7	SAE C Spline
11	SAE C Keyed
25	SAE B Spline
98	SAE BB Splined (two-piece only)

For Single or Tandem Units - unless noted

RPGP/RPGM365 Ordering Code (cont.)

RPGP/RPGM 300/400 Series Gear Pumps & Motors

Tandem: Repeat if Necessary

RPG	1	365	2	3	3	4	4	5	5	6	6	7	7	8	8	9	9	6	6	7	7	10
-----	---	-----	---	---	---	---	---	---	---	---	---	---	---	---	---	---	---	---	---	---	---	----

Code	9 – Bearing Carriers			
DUAL OUTLET - PUMP ONLY				
Outlets: for clockwise porting the top port number comes first; for counter-clockwise porting the bottom port number comes first				
CW	CCW	IN	OUT	
SAE Split Flange				
AC	CA	2-1/2"	1-1/2"	1-1/2"
AD	DA	2-1/2"	1-1/2"	1-1/4"
AE	EA	2-1/2"	1-1/2"	1"
AF	FA	2-1/2"	1-1/4"	1-1/4"
AG	GA	2-1/2"	1-1/4"	1"
AH	HA	2-1/2"	1"	1"
AJ	JA	2"	1-1/2"	1-1/2"
AK	KA	2"	1-1/2"	1-1/4"
AL	LA	2"	1-1/2"	1"
AM	MA	2"	1-1/4"	1-1/4"
AN	NA	2"	1-1/4"	1"
AP	PA	2"	1"	1"
AQ	QA	1-1/2"	1-1/2"	1-1/2"
AR	RA	1-1/2"	1-1/2"	1-1/4"
AS	SA	1-1/2"	1-1/2"	1"
AT	TA	1-1/2"	1-1/4"	1-1/4"
AU	UA	1-1/2"	1-1/4"	1"
AV	VA	1-1/2"	1"	1"
AW	WA	1-1/4"	1-1/4"	1-1/4"
AX	XA	1-1/4"	1-1/4"	1"
AY	YA	1-1/4"	1"	1"
AZ	ZA	1"	1"	1"
OD Tube Porting				
GJ	JG	2"	1-1/2"	1-1/2"
GK	KG	2"	1-1/2"	1-1/4"
GL	LG	2"	1-1/2"	1"
GM	MG	2"	1-1/4"	1-1/4"
GN	NG	2"	1-1/4"	1"
GP	PG	2"	1"	1"
GQ	QG	1-1/2"	1-1/2"	1-1/2"
GR	RG	1-1/2"	1-1/2"	1-1/4"
GS	SG	1-1/2"	1-1/2"	1"
GT	TG	1-1/2"	1-1/4"	1-1/4"
GU	UG	1-1/2"	1-1/4"	1"
GV	VG	1-1/2"	1"	1"
GW	WG	1-1/4"	1-1/4"	1-1/4"
GX	XG	1-1/4"	1-1/4"	1"
GY	YG	1-1/4"	1"	1"
GZ	ZG	1"	1"	1"

* Outlet port for rear section

Code	9 – Bearing Carriers (cont.)			
SINGLE OUTLET - PUMP ONLY				
Outlet for front section				
CW	CCW	IN	OUT	
SAE Split Flange				
CJ	JC	2-1/2"	1-1/2"	
CL	LC	2-1/2"	1-1/4"	
CM	MC	2-1/2"	1"	
HB	BH	2"	1-1/2"	
HC	CH	2"	1-1/4"	
HF	FH	2"	1"	
HL	LH	1-1/2"	1-1/2"	
HM	MH	1-1/2"	1-1/4"	
HN	NH	1-1/2"	1"	
HO	OH	1-1/4"	1-1/4"	
HP	PH	1-1/4"	1"	
HQ	QH	1"	1"	
NR	RN	2-1/2"	1-1/2"	
RS	SR	1-1/4"	1"	
OD Tube Porting				
KB	BK	2"	1-1/2"	
KC	CK	2"	1-1/4"	
KF	FK	2"	1"	
KL	LK	1-1/2"	1-1/2"	
KM	MK	1-1/2"	1-1/4"	
KN	NK	1-1/2"	1"	
KO	OK	1-1/4"	1-1/4"	
KP	PK	1-1/4"	1"	
KQ	QK	1"	1"	

* Outlet port for rear section

Code	9 – Bearing Carriers (cont.)			
COMBINED OUTLET				
Outlet for front section				
CW	CCW	IN	OUT	
SAE Split Flange (pump)				
UC	CU	2-1/2"	1-1/2"	
UF	FU	2-1/2"	1-1/4"	
UN	NU	2"	1-1/2"	
UO	OU	2"	1-1/4"	
UP	PU	1-1/2"	1-1/2"	
UQ	QU	1-1/2"	1-1/4"	
UR	RU	1-1/4"	1-1/4"	
SAE Split Flange (motor)				
AA-Double		2"	2"	
BB-Double		1-1/2"	1-1/2"	
CC-Double		1-1/4"	1-1/4"	
EE-Double		1"	1"	
FF-Double		3/4"	3/4"	
OD Tube Porting (pump)				
PE	EP	2"	1-1/2"	
PM	MP	2"	1-1/4"	
PN	NP	1-1/2"	1-1/2"	
PQ	QP	1-1/2"	1-1/4"	
PR	RP	1-1/4"	1-1/4"	
OD Tube Porting (motor)				
MM-Double		1-1/2"	1-1/2"	
NN-Double		1-1/4"	1-1/4"	
QQ-Double		1"	1"	
RR-Double		3/4"	3/4"	

Code	10 – Connecting Shaft	
1	Connecting Shaft	
For connecting tandem units		