

RCHC[®]



To innovate, drive the future 2025



Instagram



WhatsApp



WeChat

Factory Address: No.1 Gongye Road, Sujiazhuang Town, Ningjin County,
Xingtai City, Hebei Province

Office Address: Jinxiu Square, Huaiyin District, Jinan City, Shandong
Province, China

Telephone (WhatsApp) : 008613730485667 008615990999280

E-mail: rhc@rchchdraulics.com

Website: www.rchchdraulics.com

Ruichen Hydraulic Machinery Manufacturing Co., Ltd



FACTORY INTRODUCTION

Ruichen Hydraulic Machinery Manufacturing Co., Ltd., established in 2000, is a global provider of high-quality hydraulic solutions. Located in Hebei Province, China, our 55,000 m² factory employs over 300 staff, including 15 engineers and 5 senior engineers. We specialize in cast iron gear pumps, gear motors, and hydraulic control valves, widely used in construction machinery, agricultural equipment, mining, and industrial applications.

Equipped with advanced CNC machining centers, automated assembly lines, and precision testing equipment, we ensure consistent, reliable production. Our ISO and CE certifications guarantee quality and long product life.

Ruichen Hydraulic has built partnerships across Europe, the Americas, the Middle East, and Southeast Asia. We offer not only competitive products but also customized solutions, timely delivery, and comprehensive after-sales support. Committed to innovation, quality, and customer satisfaction, Ruichen Hydraulic is your trusted global hydraulic partner.

CONTENTS

RPGP20/21(PUMP/MOTOR).....	1
RPGP30/31(PUMP/MOTOR).....	2
RPGP50/51(PUMP/MOTOR).....	3
RPGP75/76(PUMP/MOTOR).....	4
RPGP315(PUMP/MOTOR).....	5
RPGP330(PUMP/MOTOR).....	6
RPGP350(PUMP/MOTOR).....	7
RPGP365(PUMP/MOTOR).....	8
RPGP620(PUMP/MOTOR).....	9
RPGP640(PUMP/MOTOR).....	10
RC101/102&RG101/102(PUMP).....	11
RPGP505(PUMP/MOTOR).....	12
RPGP511(PUMP/MOTOR).....	13
RPGP517(PUMP/MOTOR).....	14
RKP20(PUMP/MOTOR).....	15
RKP30(PUMP/MOTOR).....	16
RKP40(PUMP/MOTOR).....	17
RSFP20(PUMP/MOTOR).....	18
RSGP1(PUMP/MOTOR).....	19
RSGP2(PUMP/MOTOR).....	20
RPLP10(PUMP/MOTOR).....	21
RPLP20(PUMP/MOTOR).....	22
RPLP30(PUMP/MOTOR).....	23
RQ80/130(Sectional Valve).....	24
HC-D4 Multi-way Valve.....	25
HC-D6 Multi-way Valve.....	26
DCV Multi-way Valve.....	27

RPGP20/21(PUMP/MOTOR)



APPLICATIONS

- Bulk Feed
- Salt and sand spreaders
- Aerial Lift
- Wrecker
- Construction machinery
- Hydraulic machinery

PRODUCT INTRODUCTION

RCHC's RPGP020/21 series fixed/positive displacement commercial gear pumps offer high performance, durability & resistance to oil contamination due to their cast iron, roller bearing construction, making them an ideal selection for the Vocational Truck, Winch, and Oil & Gas markets. They are available as single or multi-section pumps. Flow range to 38.4 gpm (145.4 lpm) per section. Displacements from 0.99 to 3.9 cir (16.1 to 64.6 cc/rev). Operating pressures up to 207 bar (3,000 psi). Speeds up to 2,400rpm. Volumetric efficiencies up to 95%. CW, CCW, and Bi-rotational pumps available, SAE and SI shafts, flanges and porting available

RPGP/RPGM20/21 Specifications

RPGP020 Frame Size	05	07	10	12	15	17	20
Displacement-cm ³ /rev (in ³ /rev)	16.1 (0.99)	24.2 (1.48)	32.3 (1.97)	40.4 (2.46)	48.4 (2.96)	56.5 (3.45)	64.6 (3.94)
Max corinuuous pressure-ba (psi)	207 (3,000)	207 (3,000)	207 (3,000)	207 (3,000)	207 (3,000)	172 (2,500)	172 (2,500)
Max Speed - RPM	2400	2400	2400	2400	2400	2400	2400
Approximate Weight - Lbs [kg]	26 [12]	27 [12.5]	28 [13]	29 [13]	31 [14]	33 [15]	34 [15.5]

RPGP30/31(PUMP/MOTOR)



APPLICATIONS

- Salt and sand spreaders
- Aerial Lift
- Construction machinery
- Hydraulic machinery

PRODUCT INTRODUCTION

RCHC's RPGP030/31 series fixed/positive displacement gear pumps offer high durability & resistance to oil contamination due to their cast iron, roller bearing construction, making them an ideal selection for the Vocational Truck, Winch, and Oil & Gas markets. They are available as single or multi-section pumps with an integral valve.

Flow range to 38.4 gpm (145.4 lpm) per section, Displacements from 0.99 to 3.9 cir (16.1 to 64.6 cc/rev), Operating pressures up to 207 bar (3,000 psi), Speeds up to 2,400 rpm, Volumetric efficiencies up to 95%, CW, CCW, and Bi-rotational pumps available, SAE and SI shafts, flanges and porting available.

RPGP/RPGM30/31 Specifications

RPGP031 Frame Size	05	07	10	12	15	17	20
Displacement-cm ³ /rev (in ³ /rev)	16.1 (0.99)	24.2 (1.48)	32.3 (1.97)	40.4 (2.46)	48.4 (2.96)	56.5 (3.45)	64.6 (3.94)
Max corinuuous pressure-ba (psi)	207 (3,000)	207 (3,000)	207 (3,000)	207 (3,000)	207 (3,000)	172 (2,500)	172 (2,500)
Max Speed - RPM	2400	2400	2400	2400	2400	2400	2400
Approximate Weight - Lbs. [kg]	30 [13.5]	31 [14]	33 [15]	34 [15.5]	35 [16]	36 [16.5]	37 [17]

RPGP50/51(PUMP/MOTOR)



APPLICATIONS

- Salt and sand spreaders
- Aerial Lift
- Construction machinery
- Hydraulic machinery

PRODUCT INTRODUCTION

RCHC's RPGP50/51 series fixed/positive displacement commercial gear pumps offer high durability & resistance to oil contamination due to their cast iron, roller bearing construction making them an ideal selection for the Vocational Truck, Winch, and Oil & Gas markets. They are available as single, or multi-section pumps with an integral valve. Flow range to 63 gpm (238.5 lpm) per section. Displacements from 1.26 to 6.38 cir (20.9 to 104.5 cc/rev), Operating pressures up to 200 bar (3,000 psi), Speeds up to 2,400 rpm, Volumetric efficiencies up to 95%, CW, CCW, and Bi-rotational pumps available, SAE and SI shafts, flanges and porting available.

RPGP/RPGM50/51 Specifications

RPGP051 Frame Size	05	07	10	12	15	17	20	22	25
Displacement-cm³/rev (in³/rev)	20.9 (1.28)	31.3 (1.91)	41.8 (2.55)	52.2 (3.19)	62.7 (3.83)	73.1 (4.46)	83.6 (5.10)	94.0 (5.74)	104.5 (6.38)
Max corinuuous pressure-ba (psi)	207 (3,000)	207 (3,000)	207 (3,000)	207 (3,000)	207 (3,000)	207 (3,000)	172 (2,500)	172 (2,500)	172 (2,500)
Max Speed - RPM	2400	2,400	2,400	2,400	2,400	2,400	2,400	2,400	2,400
Approximate Weight - Lbs. [kg]	34 [15.5]	35.5 [16]	37 [17]	38.5 [17.5]	40 [18]	41.5 [19]	43 [19.5]	48.5 [22]	50 [22.5]

RPGP75/76(PUMP/MOTOR)



APPLICATIONS

- Salt and Sand Spreaders
- Aerial Lift
- Roll-Off Truck
- Moving Floor Truck
- Refuse Truck
- Oil & Gas Service Trucks

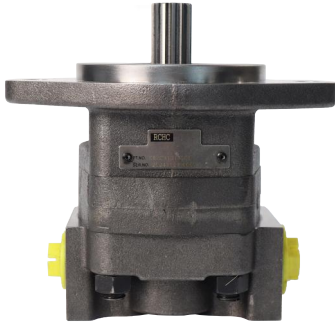
PRODUCT INTRODUCTION

RCHC's RPGP75/76 series fixed displacement commercial gear pumps offer high durability and resistance to oil contamination due to their cast iron, roller bearing construction, making them an ideal selection for the Vocational Truck, Winch, and Oil & Gas markets. They are available as single or multi-section pumps with an integral valve. Flow range to 121.4 gpm (459.5 lpm) per section, Displacements from 3.06 to 12.3 cir (50.4 to 201.6 cc/rev), Operating pressures up to 207 bar (3,000 psi), Speeds up to 2,400 rpm, Volumetric efficiencies up to 95%, CW, CCW, and bi-rotational pumps available, SAE and SI shafts, flanges and porting available.

RPGP/RPGM75/76 Specifications

RPGP076 Frame Size	7	10	12	15	17	20	22	25	27	30
Displacement-cm³/rev (in³/rev)	50.4 (3.08)	67.2 (4.10)	84.0 (5.13)	100.8 (6.15)	117.6 (7.18)	134.4 (8.20)	151.2 (9.23)	168.0 (10.25)	184.8 (11.28)	201.6 (12.30)
Max corinuuous pressure-ba (psi)	207 (3,000)	207 (3,000)	207 (3,000)	207 (3,000)	207 (3,000)	172 (2,500)	172 (2,500)	172 (2,500)	138 (2,000)	138 (2,000)
Max Speed - RPM	2,400	2,400	2,400	2,400	2,400	2,400	2,400	2,400	2,400	2,400
Approximate Weight - Lbs. [kg]	70 [32]	72 [33]	75 [34]	77 [35]	80 [36]	82 [37]	85 [39]	87 [40]	90 [41]	92 [42]

RPGP315(PUMP/MOTOR)



APPLICATIONS

- Power steering pumps
- Salt and sand spreaders
- Aerial Lift
- Construction machinery
- Hydraulic machinery

PRODUCT INTRODUCTION

RCHC's RPGP315 series fixed displacement gear pumps offer high pressure durability due to their cast iron construction, making them ideal for high duty cycle mobile applications for the Construction, Forestry, and Oil & Gas markets. They are available as a standard pump, clutch pump, and tandem pump. Displacements from 0.62 to 2.48 cir (10.2 to 40.6 cc/rev), Operating pressures up to 241 bar (3,500 psi), Speeds up to 3,000 rpm, Volumetric efficiencies up to 98%, CW, CCW, and Bi-rotational pumps available, SAE and SI shafts, flanges and porting available

RPGP/RPGM315 Specifications

RPGP315 Frame Size	05	07	10	12	15	17	20
Displacement-cm³/rev (in³/rev)	10.2 (0.62)	15.2 (0.93)	20.3 (1.24)	25.4 (1.55)	30.5 (1.86)	35.6 (2.17)	40.6 (2.48)
Max continuous pressure-ba (psi)	241 (3,500)	207 (3,000)	241 (3,500)	241 (3,500)	228 (3,300)	200 (2,900)	172 (2,500)
Max Speed - RPM	3000	3,000	3,000	3,000	3,000	3,000	3,000
Approximate Weight - Lbs. [kg]	16.0 [7.2]	17 [7.7]	18 [8.2]	19 [8.6]	20 [9.1]	21 [9.5]	22 [10.0]

RPGP330(PUMP/MOTOR)



APPLICATIONS

- Salt and sand spreaders
- Aerial Lift
- Construction machinery
- Hydraulic machinery

PRODUCT INTRODUCTION

RCHC's RPGP330 series fixed displacement gear pumps offer high pressure durability due to their cast iron construction, making them ideal for high duty cycle mobile applications for the Construction, Forestry, and Oil & Gas markets. They are available as a standard pump, clutch pump, and tandem pump. Flow range to 40 gpm (151 lpm) per section, Displacements from 0.99 to 3.94 cir (16.1 to 64.6 cc/rev), Operating pressures up to 241 bar (3,500 psi), Speeds up to 3,000 rpm, Volumetric efficiencies up to 98%, CW, CCW, and Bi-rotational pumps available, SAE and SI shafts, flanges and porting available.

RPGP/RPGM330 Specifications

RPGP330 Frame Size	05	07	10	12	15	17	20
Displacement-cm³/rev (in³/rev)	16.1 (0.99)	24.2 (1.48)	32.3 (1.97)	40.4 (2.46)	48.4 (2.96)	56.5 (3.45)	64.6 (3.94)
Max continuous pressure-ba (psi)	241 (3,500)	241 (3,500)	241 (3,500)	241 (3,500)	241 (3,500)	224 (3,250)	207 (3,000)
Max Speed - RPM	3000	3,000	3,000	3,000	3,000	3,000	3,000
Approximate Weight - Lbs. [kg]	33.6 [15.2]	34.8 [15.8]	36 [16.3]	37.3 [16.9]	38.5 [17.5]	40 [18.1]	41.3 [18.7]

RPGP350(PUMP/MOTOR)



APPLICATIONS

- Salt and sand spreaders
- Aerial Lift
- Live (Moving) Floor Trailers
- Roll Off Trailers

PRODUCT INTRODUCTION

RCHC's RPGP350 series fixed displacement gear pumps offer high pressure durability due to their cast iron construction, making them ideal for high duty cycle mobile applications for the Construction, Forestry, and Oil & Gas markets. They are available as a standard pump, clutch pump, and tandem pump. Flow range to 66 gpm (250 lpm) per section, Displacements from 1.28 to 6.38 cir (20.9 to 104.5 cc/rev), Operating pressures up to 241 bar (3,500 psi), Speeds up to 2,400 rpm, Volumetric efficiencies up to 98%, CW, CCW, and Bi-rotational pumps available, SAE and SI shafts, flanges and porting available

RPGP/RPGM350 Specifications

RPGP350 Frame Size	05	07	10	12	15	17	20	22	25
Displacement-cm ³ /rev (in ³ /rev)	20.9 (1.28)	31.3 (1.91)	41.8 (2.55)	52.2 (3.19)	62.7 (3.83)	73.1 (4.46)	83.6 (5.10)	94.0 (5.74)	104.5 (6.38)
Max corinuuous pressure-ba (psi)	241 (3,500)	241 (3,500)	241 (3,500)	241 (3,500)	241 (3,500)	224 (3,250)	207 (3,000)	190 (2,750)	172 (2,500)
Max Speed - RPM	2400	2,400	2,400	2,400	2,400	2,400	2,400	2,400	2,400
Approximate Weight - Lbs. [kg]	48 [21.8]	49.5 [22.4]	51 [23.8]	52.5 [23.1]	54 [24.5]	55.5 [25.2]	57.0 [25.9]	58.5 [26.5]	60.0 [27.2]

RPGP365(PUMP/MOTOR)



APPLICATIONS

- Salt and sand spreaders
- Aerial Lift
- Live (Moving) Floor Trailers
- Roll Off Trailers

PRODUCT INTRODUCTION

RCHC's RPGP365 series fixed displacement gear pumps offer high pressure durability due to their cast iron construction, making them ideal for high duty cycle mobile applications for the Construction, Forestry, and Oil & Gas markets. They are available as a standard pump, clutch pump, and tandem pump. Flow range to 93.5 gpm (354 lpm) per section, Displacements from 2.7 to 9 cir (44.3 to 147.5 cc/rev), Operating pressures up to 241 bar (3,500 psi), Speeds up to 2,400 rpm, Volumetric efficiencies up to 98%, CW, CCW, and Bi-rotational pumps available, SAE and SI shafts, flanges and porting available.

RPGP/RPGM365 Specifications

RPGP365 Frame Size	07	10	12	15	17	20	22	25
Displacement-cm ³ /rev (in ³ /rev)	44.3 (2.70)	59.0 (3.60)	73.8 (4.50)	88.5 (5.40)	103.3 (6.30)	118.0 (7.20)	132.8 (8.10)	147.5 (9.00)
Max corinuuous pressure-ba (psi)	241 (3,500)	241 (3,500)	241 (3,500)	241 (3,500)	241 (3,500)	241 (3,500)	224 (3,250)	207 (3,000)
Max Speed - RPM	2400	2,400	2,400	2,400	2,400	2,400	2,400	2,400
Approximate Weight - Lbs. [kg]	53.5 [24.3]	56 [25.4]	58.5 [26.5]	61.0 [27.7]	63.5 [28.8]	66.0 [30]	68.5 [31.1]	71.0 [32.2]

RPGP620(PUMP/MOTOR)



APPLICATION

- Fan drive pump
- Mower pump
- Steering and brake pump
- Winch pump

PRODUCT INTRODUCTION

RCHC's RPGP620 series is a type of fixed/positive displacement gear pump that offers the most volumetrically efficient and power dense solution due the interlocking, two-piece cast iron design, making the 600 series ideal for engineered mobile equipment solutions demanding energy efficient, high performing hydraulic systems. Features/Benefits:Two-piece, interlocking body construction for high efficiency and high pressure, Cast iron pumping sections for durability,Journal bushings for long life,Pressure balanced thrust plates for high efficiency,Multiple sections available.Sizes from 19 to 50cc,Operating pressures up to 275 bar (4,000 psi),Speeds up to 3,500 rpm, CW, CCW, and Bi-rotational pumps available, SAE shafts, flanges and porting available.

RPGP620 Specifications

RPGP620 Frame Size		016	019	021	023	026	029	033	036	037	041	044	046	050	052
Pump displacement	cm³/rev	16	19	21	23	26	29	33	36	37	41	44	46	50	52
Continuous pressure	bar	280	280	280	280	280	280	280	250	250	220	210	210	210	210
Intermittent pressure	bar	300	300	300	300	300	300	300	300	280	250	230	220	210	210
Minimum rpm (maximum outlet pressure)	rpm	600	600	600	600	600	600	600	600	600	600	600	600	600	600
Maximum rpm (inlet and maximum outlet pressure)	rpm	3000	3000	3000	3000	3000	3000	3000	3000	3000	3000	3000	3000	3000	3000
Size "L"	mm	23	26	29	35.5	38.5	42	48	54.5	61	67	48	54.5	61	67

RPGP640(PUMP/MOTOR)



APPLICATION

- Fan drive pump
- Mower pump
- Steering and brake pump
- Winch pump

PRODUCT INTRODUCTION

RCHC's RPGP640 series fixed/positive displacement gear pumps offer the most volumetrically efficient and power dense solution due their interlocking, two-piece cast iron design, making the 600 series ideal for engineered mobile equipment solutions demanding energy efficient, high performing hydraulic systems. The 600 series is a type of cast iron pump widely used in the most demanding applications.Features/Benefits:Two-piece, interlocking body construction for high efficiency and high pressure, Cast iron pumping sections for durability,Journal bushings for long life,Pressure balanced thrust plates for high efficiency,Multiple sections available.Sizes from 30 to 80cc, Operating pressures up to 275 bar (4,000 psi), Speeds up to 3,000 rpm, CW, CCW, and Bi-rotational pumps available, SAE shafts, flanges and porting available.

RPGP640 Specifications

RPGP640 Frame Size		030	035	040	045	050	055	060	065	070	075	080	090	0100
Pump displacement	cm³/rev	30	35	40	45	50	55	60	65	70	75	80	90	100
Continuous pressure	bar	280	280	280	280	280	280	250	210	210	180	250	210	210
Intermittent pressure	bar	310	310	310	310	310	310	290	270	250	250	210	190	180
Minimum rpm (maximum outlet pressure)	rpm	600	600	600	600	600	600	600	600	600	600	600	600	600
Maximum rpm (inlet and maximum outlet pressure)	rpm	3000	3000	3000	3000	3000	3000	3000	3000	3000	3000	3000	3000	3000
Size "L"	mm	43.8	43.8	47	47	50.8	50.8	53.6	53.6	57.4	57.4	57.4	65	65

RC101/102 and RG101/102(PUMP)



APPLICATIONS

- Dump Truck
- Dump Trailer

PRODUCT INTRODUCTION

RCHC's RC(G)101/RC(G)102 fixed displacement gear pumps offer high performance and high endurance due to its cast iron construction, making it an ideal selection for the Vocational & Municipal Equipment market. It is available as a standard pump with integrated valve for raising and lower dump beds, with integral relief valve.

RCHC's C(G)101/C(G)102 series dump pumps provide the most reliable, trouble free performance in the industry for dump truck and trailer applications. Operating pressures up to 172 bar (2,500 psi), speeds up to 2,400 rpm, flows up to 27.7(16.9) gpm.

RC101/102 and RG101/102 Specifications

RC101 Frame Size	RG101			RG102			RC101		RC102	
Tooth width (in)	3/4"	1-1/2"	2"	3/4"	1-1/2"	2"	2"	2-1/2"	2"	2-1/2"
Displacement (ml/rev)	24.2	48.5	64.6	24.2	48.5	64.6	83.6	104.5	83.6	104.5
Rated pressure (Mpa)	13.8	13.8	13.8	13.8	13.8	13.8	13.8	13.8	13.8	13.8
Maximum pressure (Mpa)	17.2	17.2	17.2	17.2	17.2	17.2	17.2	17.2	17.2	17.2
Rated speed (rev)	1800	1800	1800	1800	1800	1800	1800	1800	1800	1800
Maximum speed	2400	2400	2400	2400	2400	2400	2400	2400	2400	2400
Reference weight (kg)	14.1	15.9	17.2	14.1	15.9	17.2	30.3	31.3	30.9	32.2

RPGP505(PUMP/MOTOR)



APPLICATIONS

- Power steering pumps – priority valves available
- Brake pump
- Brush Chipper
- Trencher pump
- Hydraulic Power Unit
- Aerial Lift
- Transfer pump
- Lube pump

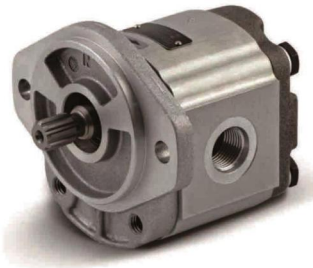
PRODUCT INTRODUCTION

RCHC's RPGP505 series fixed displacement gear pumps offer cost effective, high power density due to their aluminum, bushing block construction, making them ideal in a broad selection of markets such as Material Handling, Agriculture, Turf, as well as a variety of Industrial Applications. They are available as single or multi-section varieties. Sizes from 2 to 13cc, Operating pressures up to 275 bar (3,988 psi), speeds up to 4,000 rpm, CW, CCW, and Bi-rotational pumps available, SAE shafts, flanges and porting available

RPGP/RPGM505 Specifications

RPGP505 Frame Size		20	30	40	50	60	70	80	90	100	110	120
Displacements	cm³/rev	2.0	3.0	4.0	5.0	6.0	7.0	8.0	9.0	10.0	11.0	12.0
	in³/rev	0.12	0.18	0.24	0.31	0.37	0.43	0.49	0.55	0.61	0.67	0.73
Continuous Pressure	bar	275	275	275	275	275	275	275	250	250	250	220
	psi	3988	3988	3988	3988	3988	3988	3988	3625	3625	3625	3190
Minimum Speed	rpm	500	500	500	500	500	500	500	500	500	500	500
Max. outlet pressure	rpm	500	500	500	500	500	500	500	500	500	500	500
Minimum Speed inlet & Max. outlet pressure	rpm	4000	4000	4000	4000	3600	3300	3000	2800	2800	2400	2400
Input Power Max Pressure and 1500 rpm	HP	2.15	3.08	4.02	5.10	6.03	7.11	8.05	8.45	9.25	10.19	10.06
	kw	1.6	2.3	3.0	3.8	4.5	5.3	6.0	6.3	6.9	7.6	7.5
Dimension L	mm	38.5	41.1	43.8	46.5	49.1	51.8	54.5	57.2	59.8	62.5	65.2
	in	1.52*	1.62*	1.72*	1.83*	1.93*	2.04*	2.15*	2.25*	2.35*	2.46*	2.57*
Approximate Weight	lbs	4.76	4.89	5.00	5.11	5.25	5.36	5.47	5.60	5.69	5.80	5.91
	kg	2.16	2.22	2.27	2.32	2.38	2.43	2.48	2.54	2.58	2.63	2.68

RPGP511(PUMP/MOTOR)



APPLICATION

- Power steering pumps – priority valves available
- Brake pump
- Brush Chipper
- Trencher pump
- Hydraulic Power Unit
- Aerial Lift
- Transfer pump
- Lube pump

PRODUCT INTRODUCTION

RCHC's Aluminum Pump RPGP511 Series fixed displacement gear pump offers high performance and high power density due to its aluminum construction, making it an ideal selection for the Aerial, Agriculture, Construction, Forestry, Material Handling, and Turf Equipment markets where durability and efficiency are important. Features & Benefits: Three-piece construction for distribution flexibility, Aluminum pumping sections for light weight, Journal bushings for long life, Pressure balanced thrust blocks for high efficiency. Sizes from 4 to 33cc, Operating pressures up to 250 bar, Speeds up to 3,500 rpm, Rotation CW and CCW.

RPGP/RPGM511 Specifications

RPGP511 Frame Size	0040	0050	0060	0070	0080	0100	0110	0120	0140	0160	0180	0190	0210	0230	0250	02700	0280	0310	0330	
Displacements	cm³/rev	4	5	6	7	8	10	11	12	14	16	18	19	21	23	25	27	28	31	33
	in³/rev	0.24	0.31	0.37	0.43	0.49	0.61	0.67	0.73	0.85	0.98	1.10	1.16	1.28	1.40	1.53	1.65	1.71	1.89	2.01
Continuous Pressure	bar	250	250	250	250	250	250	250	250	250	250	250	250	235	225	210	190	185	165	155
	psi	3625	3625	3625	3625	3625	3625	3625	3625	3625	3625	3625	3625	3410	3265	3045	2755	2685	2395	2248
Intermittent PreSSure	bar	275	275	275	275	275	275	275	275	275	275	275	240	235	220	200	190	170	160	
	psi	3988	3988	3988	3988	3988	3988	3988	3988	3988	3988	3988	3480	3408	3190	2900	2755	2465	2320	
Minimum Speed@ Max. outlet pressure	rpm	500	500	500	500	500	500	500	500	500	500	500	500	500	500	500	500	500	500	500
Mwimum Sced@ 0 inlet & Max. outlet pressure	rpm	3500	3500	3500	3500	3500	3500	3500	3500	3500	3250	3250	2800	2750	2500	2350	2350	2350	2000	
Pump Input Power @Max Pressure and 1500 rpm	HP	4.02	5.03	6.03	7.04	8.05	10.06	11.13	12.07	14.08	16.09	18.10	19.18	19.31	19.71	19.98	20.12	21.19	22.40	23.20
	kw	3.0	3.8	4.5	5.3	6.0	7.5	8.3	9.0	10.5	12.0	13.5	14.3	14.4	14.7	14.9	15.0	15.8	16.7	17.3
Dimension L	mm	47.0	48.6	50.1	51.7	53.3	56.5	58.0	59.6	62.8	65.9	69.0	70.6	73.7	76.9	80.0	83.2	84.8	89.5	92.6
	in	1.85"	1.91"	1.97"	2.04"	2.10"	2.22"	2.28"	2.35"	2.47"	2.59"	2.72"	2.78"	2.90"	3.03"	3.15"	3.28"	3.34"	3.52"	3.65"
Approximate Weight	lbs	7.1	7.3	7.5	7.7	7.7	7.8	7.9	8.2	8.2	8.4	8.6	8.8	9.0	9.3	9.3	9.3	9.5	9.7	9.9
	kg	3.2	3.3	3.4	3.5	3.5	3.6	3.6	3.7	3.7	3.8	3.9	3.9	4.0	4.1	4.2	4.2	4.3	4.4	4.5

RPGP517(PUMP/MOTOR)



APPLICATIONS

- Construction Machinery
- Agricultural Equipment
- Industrial Machinery
- Mining Equipment
- Material Handling

PRODUCT INTRODUCTION

RCHC's Aluminum Pump RPGP517 Series fixed displacement gear pump offers high performance and high power density due to its aluminum construction, making it an ideal selection for the Aerial, Agriculture, Construction, Forestry, Material Handling, and Turf Equipment markets. It is available as a standard pump, clutch pump, tandem pump or as a pump with a priority flow valve including primary circuit relief valve. Features/Benefits: 1. Three-piece construction for distribution flexibility 2. Aluminum pumping sections for light weight 3. Journal bushings for long life 4. Pressure balanced thrust blocks for high efficiency 5. Multiple sections available. Sizes from 14 to 70 cc, Operating pressures up to 275 bar (3,988 psi), Speeds up to 3,400 rpm, CW, CCW, and Bi-rotational pumps available, SAE shafts, flanges and porting available.

RPGP/RPGM517 Specifications

RPGP517 Frame Size		0014	0160	0190	0230	0250	0280	0330	0360	0380	0440	0520	0580	0700
Displacements	cm³/rev	14.0	16.0	19.0	23.0	25.0	28.0	33.0	36.0	38.0	44.0	52.0	58.0	70.0
	in³/rev	0.85	0.98	1.16	1.40	1.53	1.71	2.01	2.20	2.32	2.69	3.17	3.54	3.05
Continuous Pressure	bar	250	250	250	250	250	250	250	250	250	220	200	180	160
	psi	3625	3625	3625	3625	3625	3625	3625	3625	3625	3190	2900	2610	2320
Intermittent PreSSure	bar	275	275	275	275	275	275	275	275	275	240	220	200	180
	psi	3988	3988	3988	3988	3988	3988	3988	3988	3988	3480	3190	2900	2610
Minimum Speed@ Max. outlet pressure	rpm	500	500	500	500	500	500	500	500	500	500	500	500	500
Mwimum Speed@ 0 Inlet & Max. outlet pressure	rpm	3400	3400	3400	3300	3100	3100	3000	3000	3000	2800	2700	2600	2400
Pump Input Power @Max Pressure and 1500 rpm	HP	12.87	14.75	17.57	21.19	23.03	25.88	30.44	33.16	35.00	36.21	38.35	40.23	41.84
	kw	9.6	11.0	13.1	15.8	17.2	19.3	22.7	24.7	26.1	27.0	28.6	30.0	31.2
Dimension L	mm	68.3	70.3	73.3	77.4	79.4	82.4	87.5	90.5	92.5	98.6	106.7	112.8	124.9
	in	2.69*	2.77*	2.89*	3.05*	3.13*	3.24*	3.44*	3.56*	3.64*	3.88*	4.20*	4.44*	4.92*
Approximate Weight	lbs	17.4	17.6	17.9	18.3	18.5	18.7	19.2	19.4	19.6	20.2	20.9	21.5	22.6
	kg	7.9	8.0	8.1	8.3	8.4	8.5	8.7	8.8	8.9	9.2	9.5	9.8	10.2

RKP20 (PUMP / MOTOR)



APPLICABLE

- Excavators
- Loaders
- Agricultural
- Sprinkler
- Irrigation equipment,
- Hydraulic presses
- Forklifts
- Lifting platforms

PRODUCT INTRODUCTION

RKP20 Cast Iron Group 2 Gear pump, 4cc/rev Clockwise, Flange Ports. The RKP20 series pumps and motors are designed for exceptional durability and high performance, featuring a rugged cast iron housing. Engineered for reliability and volumetric efficiency, these units perform exceptionally well even under high operating pressures. RKP20 pumps and motors are available with mounting flanges and side or rear ports, conforming to both SAE and European standards. The KAPPA series offers a versatile range of configurations, including multiple mounting flange, shaft, and port combinations, making it suitable for a wide variety of applications.

RKP20 Specifications

		KP 20-4	KP 20-6,3	KP 20-8	KP 20-11,2	KP 20-14	KP 20-16	KP 20-20	KP 20-25	KP 20-31,5
Displacement	in ³ /rev (cm ³ /rev)	0.30 (4,95)	0.40 (6,61)	0.50 (8,26)	0.69 (11,23)	0.89 (14,53)	1.03 (16,85)	1.29 (21,14)	1.61 (26,42)	2.01 (33,03)
Max. pressure	P ¹	4133 (285)	4133 (285)	4133 (285)	3988 (275)	3843 (265)	3770 (260)	3045 (210)	2610 (180)	2030 (140)
	P ²	4350 (300)	4350 (300)	4350 (300)	4205 (290)	4205 (290)	4205 (290)	3335 (230)	2900 (200)	2320 (160)
	P ³	4785 (330)	4785 (330)	4785 (330)	4640 (320)	4640 (320)	4640 (320)	3625 (250)	3190 (220)	2610 (180)
Max. speed	min ⁻¹	4000	4000	3500	3500	3500	3000	3000	2500	2000
Min. speed	min ⁻¹	350	350	350	350	350	300	300	300	300

RKP30 (PUMP / MOTOR)



APPLICABLE

- Excavators
- Loaders
- Agricultural
- Sprinkler
- Irrigation equipment,
- Hydraulic presses
- Forklifts
- Lifting platforms

PRODUCT INTRODUCTION

The main feature of the RKP30 product is its sturdy and compact two-piece structure, which allows it to integrate multiple functions in a limited space. Displacement: 19, 63cm³/rev (1.20in³/rev)--81, 68 cm³/rev (4.98in³/rev) pressure Relief valve setting 300 bar Relief valve max. peak pressure 320 bar, MAX. SPEED Max. 3000 min⁻¹

RKP30 Specifications

RKP30 Frame Size		K.30-19,5	K.30-22	K.30-24	K.30-27	K.30-29	K.30-31	K.30-34	K.30-38	K.30-41	K.30-43	K.30-46	K.30-51	K.30-56	K.30-61	K.30-73	K.30-82
Displacement	cm ³ /rev	19,63	21,99	24,03	26,7	29,06	30,63	34,56	39,27	41,62	43,98	46,34	51,83	56,54	61,26	73,82	81,68
Max. pressure	P ²	bar	280	300	280	300	260	300	260	300	240	300	230	300	230	300	230
	P ³	bar	300	320	300	320	280	320	280	320	260	320	250	320	250	310	280
Max. speed	min ⁻¹	3000	3000	3000	3000	3000	3000	3000	3000	3000	3000	3000	2500	2500	2500	2500	2800
Min. speed	min ⁻¹	350	350	350	350	350	350	350	350	350	350	350	350	350	350	350	350

RKP40 (PUMP / MOTOR)



APPLICATIONS

- Construction Machinery
- Mining machinery
- Material handling
- Agricultural Machinery
- Forestry machinery
- Lawn care
- Fan drive

PRODUCT INTRODUCTION

Two stage cast iron gear pump and gear motor. The sturdy and compact structure allows it to integrate multiple functions within a limited space. Displacement: 61,43 cm³/rev (3.75 cm³/rev) -150,79 cm³/rev (9.20 cm³/rev) Pressure: Maximum continuous working pressure: 240 bar (3480 psi), maximum peak pressure: 280 bar (4060 psi), maximum speed: 2800 min⁻¹. Robust and compact design, efficient under high temperature conditions, low noise emissions

RKP40 Specifications

RKP40 Frame Size		K. 40-63	K. 40-73	K. 40-87	K. 40-109	K. 40-121	K. 40-133	K. 40-151
Displacement	cm ³ /rev (in ³ /rev)	61.43 (3.75)	72.60(4.43)	86.56(5.28)	108.90 (6.64)	121.80(7.43)	134.03 (8.18)	150.99 (9.20)
Maximum pressure	P ¹	240(3480)	240 (3480)	240 (3480)	230 (3335)	210(3045)	200(2900)	190(2755)
	P ²							
	P ³							
Maximum speed	min ⁻¹	2800	2800	2800	2800	2500	2500	2500
Minimum speed		300	300	300	300	300	300	300

RSFP20 (PUMP/MOTOR)



APPLICATION

- Semi-trailer
- Dumper
- Truck crane
- Reloader
- Concrete pump truck
- Drilling machine

PRODUCT INTRODUCTION

The RSFP20 series is designed for durability and versatility, with a high-strength cast iron shell offering strong bearing capacity and excellent performance, even at ultra-low speeds. The input shaft connection form can be adapted to metric involute splines, suiting various connection positions. A reliable shaft seal ensures zero le

The pump is cast iron with outer meshing gears, and users can choose from square and triangular mounting flanges, with further customization available upon request. A wide selection of mounting flanges, shafts, and port configurations ensures the RSFP series fits a broad range of applications. It operates within a pressure range of 210-250 and Fluid temperature: -15°C-+80°C. Speed: 600-3000.CW, CCW, and Bi-rotational pumps available

RSFP20 Specifications

		025	034	042	052	065	074	080	0100	0125
Pump displacement	cm ³ /rev	25	34	42	52	65	74	80	100	125
Continuous pressure	bar	230	230	230	230	210	210	250	250	230
Intermittent pressure	bar	280	280	280	280	250	250	300	300	280
Minimum rpm (maximum outlet pressure)	rpm	600	600	600	600	600	600	600	600	600
Maximum rpm (inlet and maximum outlet pressure)	rpm	3000	3000	3000	3000	3000	3000	3000	3000	3000

RSGP1 (PUMP / MOTOR)



APPLICATIONS

- Lifting and transporting machinery
- Road machinery
- Environmental protection machinery
- Light industry machinery
- Forklift

PRODUCT INTRODUCTION

RSGP1 series gear pump are environmental friendly products with the features of low noise,smart structure and installation. The pumps are widely applied in the industries of hoisting and conveying machinery,environmental protection machinery,light industry machinery,ect. The pump has been the first option accessory parts for variety friendly main equipment.Maximum continuous working pressure 206bar, maximum peak pressure 245bar, maximum rotation speed 4000min⁻¹

RSGP1 Specifications

RSGP1 Frame Size	RSGP1-16	RSGP1-18	RSGP1-20	RSGP1-23	RSGP1-25	RSGP1-27	RSGP1-30	RSGP1-32	RSGP1-34	RSGP1-36
Displacements	16	18	20	23	25	27	30	32	34	36
Theoretical Displacement	15.9	17.9	20.0	23.3	24.5	27.3	29.2	32.4	33.2	35.7
Rated Pressure [MPa]	20.6	20.6	20.6	20.6	20.6	20.6	20.6	20.6	20.6	20.6
Instantaneous Maximum pressure [MPa]	24.5	24.5	24.5	24.5	24.5	24.5	24.5	24.5	24.5	24.5
Speed [r/min]	Minimum	500	500	500	400	400	400	400	400	400
	Maximum	4000	4000	4000	4000	3500	3500	3000	3000	3000
Weight	3.5	3.6	3.7	3.9	4.0	4.2	4.3	4.4	4.5	4.7

RSGP2 (PUMP / MOTOR)



APPLICATION

- Excavators
- Bulldozers
- Agricultural machinery
- Hydraulic presses
- Injection molding
- Forklifts
- Lifting platforms
- Drilling
- Mining Equipment

PRODUCT INTRODUCTION

RSGP2 series gear pump is external gear pump possessing axial clearance automatic and radial hydraulic balance,adopting three opening struture. The bearings and the side plate is bimetallic material.The front and rear covers, are made of aluminum accessory with high strength. The middle part is consist of iron casting and the surface is covered with metal ceramic.All above improve the performance,lifetime and reliability of the pump.The maximum continuous working pressure is 245bar, the maximum peak pressure is 294 bar, the maximum speed is 3000min⁻¹

RSGP2 Specifications

RSGP2 Frame Size	RSGP2-20	RSGP2-23	RSGP2-25	RSGP2-27	RSGP2-32	RSGP2-36	RSGP2-40	RSGP2-44	RSGP2-48	RSGP2-52
Nominal displacement(mL/r)	20	23	25	27	32	36	40	44	48	52
Pressure(Mpa)	Rated	24.5	24.5	24.5	24.5	24.5	24.5	22.6	20.6	17.2
	Max	29.4	29.4	29.4	29.4	29.4	29.4	27.5	24.5	20.6
Rotation speed(r/min)	Min	400	400	400	400	400	400	400	400	400
	Max	3000	3000	3000	3000	3000	3000(2500)	3000(2500)	3000(2500)	3000(2500)
Inlet pressureMpa	-0.02-0.2	-0.02-0.2	-0.02-0.2	-0.02-0.2	-0.02-0.2	-0.02-0.2	-0.02-0.2	-0.02-0.2	-0.02-0.2	-0.02-0.2
Weight(kg)	4.9 (4.4)	5.1 (4.6)	5.3 (4.8)	5.4 (4.9)	5.7 (5.1)	5.9 (5.3)	6.1 (5.4)	6.3 (5.6)	6.6 (5.9)	6.8 (6.1)

RPLP10 (PUMP/MOTOR)



APPLICATION

- Semi-trailer
- Dumper
- Truck crane
- Reloader
- Concrete pump truck
- Drilling machine

PRODUCT INTRODUCTION

RPLP10 is a compact and high-performance external gear pump. It offers a displacement range from 1.07 to 10.67 cc/rev (0.07 to 0.65 in³/rev), making it suitable for a variety of flow requirements. The pump operates at working pressures up to 4205 psi and can reach speeds of 4000 RPM, ensuring reliable performance under strenuous conditions. Constructed with a high-strength aluminum body and flange. They are available as single or multi-section varieties. Its precision-engineered gears and robust construction contribute to high efficiency and long service life, ideal for use in construction machinery, agricultural equipment, and material handling systems.

RPLP10 Specifications

			PLP10• 1	PLP10• 1,5	PLP10• 2	PLP10• 2,5	PLP• 3,15	PLP10• 4	PLP10• 5	PLP10• 5,8	PLP10• 6,3	PLP10• 8	PLP10• 10
Displacement		in³ /rev (cm³ /rev)	0.07 (1,07)	0.10 (1,6)	0.13 (2,13)	0.16 (2,67)	0.20 (3,34)	0.26 (4,27)	0.33 (5,34)	0.38 (6,20)	0.41 (6,67)	0.52 (8,51)	0.65 (10,67)
Max. pressure	P¹	psi (bar)	3770 (260)	3770 (260)	3770 (260)	3770 (260)	3770 (260)	3625 (250)	3625 (250)	3335 (230)	3335 (230)	2610 (180)	2030 (140)
	P²		4060 (280)	4060 (280)	4060 (280)	4060 (280)	4060 (280)	3915 (270)	3915 (270)	3625 (250)	3625 (250)	2900 (200)	2320 (160)
	P³		4205 (290)	4205 (290)	4205 (290)	4205 (290)	4205 (290)	4060 (280)	4060 (280)	3770 (260)	3770 (260)	3045 (210)	2465 (170)
Max. speed		min⁻¹	4000	4000	4000	4000	4000	4000	4000	3500	3500	3500	3500
Min. speed			650	650	650	650	650	650	650	650	650	650	

RPLP20 (PUMP/MOTOR)



APPLICATION

- Semi-trailer
- Dumper
- Truck crane
- Reloader
- Concrete pump truck
- Drilling machine

PRODUCT INTRODUCTION

RPLP20 is a compact and high-performance external gear pump. It offers a displacement range from 4.95 to 33.03 cc/rev (0.30 to 2.01 in³/rev), making it suitable for a variety of flow requirements. The pump operates at working pressures up to 4350 psi and can reach speeds of 4000 RPM, ensuring reliable performance under strenuous conditions. Constructed with a high-strength aluminum body and flange. They are available as single or multi-section varieties. Its precision-engineered gears and robust construction contribute to high efficiency and long service life, ideal for use in construction machinery, agricultural equipment, and material handling systems.

RPLP20 Specifications

		PLP20 •4	PLP20 •6,3	PLP20 •7,2	PLP20 •8	PLP20 •9	PLP20 •10,5	PLP20 •11,2	PLP20 •14	PLP20 •16	PLP20 •19	PLP20 •20	PLP20 •24,5	PLP20 •25	PLP20 •27,8	PLP20 •31,5	
Displacement		in ³ /rev (cm ³ /rev)	0.30 (4,95)	0.40 (6,61)	0.44 (7,29)	0.50 (8,26)	0.56 (9,17)	0.66 (10,9)	0.69 (11,23)	0.89 (14,53)	1.03 (16,85)	1.16 (19,09)	1.29 (21,14)	1.52 (24,84)	1.61 (26,42)	1.72 (28,21)	2.01 (33,03)
Max. pressure	P ¹	psi (bar)	3625 (250)	3625 (250)	3625 (250)	3625 (250)	3625 (250)	3625 (250)	3625 (250)	3625 (250)	2900 (200)	2900 (200)	2465 (170)	2465 (170)	1885 (130)	1885 (130)	
	P ²		4060 (280)	4060 (280)	4060 (280)	4060 (280)	4060 (280)	4060 (280)	4060 (280)	4060 (280)	3190 (220)	3190 (220)	2755 (190)	2755 (190)	2175 (150)	2175 (150)	
	P ³		4350 (300)	4350 (300)	4350 (300)	4350 (300)	4350 (300)	4350 (300)	4350 (300)	4350 (300)	3480 (240)	3480 (240)	3045 (210)	3045 (210)	2465 (170)	2465 (170)	
Max. speed		min ⁻¹	4000	4000	4000	3500	3500	3500	3500	3500	3000	3000	3000	2500	2500	2000	2000
Min. speed			600	600	600	600	600	600	600	500	500	500	500	500	500	500	

RPLP30 (PUMP/MOTOR)



APPLICATIONS

- Bulk Feed
- Salt and sand spreaders
- Aerial Lift
- Wrecker
- Construction machinery
- Hydraulic machinery

PRODUCT INTRODUCTION

RPLP30 is a external gear pump designed for medium to heavy-duty hydraulic applications. It features a high-strength aluminum alloy housing, precision-engineered gear wheels, sleeve bearings, and durable end plates for reliable performance. With a displacement range typically spanning from 21.99 cc/rev to 91.10 cc/rev, the RPLP30 series is suitable for a variety of mobile and industrial uses, including tractors, construction machinery, and loaders. The pump is available in multiple configurations, offering flexibility in flange types, shaft designs, and porting options to accommodate diverse hydraulic system requirements. Built for durability and versatility, the RPLP30 is an efficient solution for demanding hydraulic power systems. They are available as single or multi-section varieties.

RPLP30 Specifications

		PLP30-22	PLP30-27	PLP30-34	PLP30-38	PLP30-43	PLP30-51	PLP30-61	PLP30-73	PLP30-82	PLP30-90
Displacement	in ³ /rev (cm ³ /rev)	1.34 (21.99)	1.63 (26.70)	2.11 (34.55)	2.40 (39.27)	2.68 (43.98)	3.16 (51.83)	3.74 (61.26)	4.50 (73.82)	4.98 (81.68)	5.56 (91.10)
Max. pressure	P ¹	3625 (250)	3625 (250)	3480 (240)	3480 (240)	3335 (230)	3045 (210)	2755 (190)	2465 (170)	2320 (160)	2175 (150)
	P ²	3915 (270)	3915 (270)	3770 (260)	3770 (260)	3625 (250)	3335 (230)	3045 (210)	2755 (190)	2465 (170)	2320 (160)
	P ³	4060 (280)	4060 (280)	3915 (270)	3915 (270)	3770 (260)	3480 (240)	3190 (220)	2900 (200)	2610 (180)	2465 (170)
Max. speed	min ⁻¹	3000	3000	3000	3000	3000	2500	2500	2500	2200	2200
Min. speed		350	350	350	350	350	350	350	350	350	350

RQ80 RQ130 SECTIONAL VALVE



APPLICATIONS

- Excavators
- Cranes
- Backhoe loaders
- Wheel loaders
- Presses
- Boom trucks
- Mounted cranes

The RQ80/RQ130 is a modular sectional directional control valve. It supports parallel, tandem, or series circuit configurations and offers optional carry-over ports for continuous flow between sections. The valve is available with anti-shock and anti-cavitation cartridges to enhance stability and prevent damage under high-cycle operations. A variety of intermediate sections can be integrated to support multiple circuit functions. It accommodates a broad selection of actuation options including manual, pneumatic, electro-pneumatic, hydraulic, direct solenoid, and electrohydraulic on-off controls, providing adaptability to diverse operational requirements.

RQ80 Specifications

Nominal flow rating	80 l/min - (34.3 Us gpm)
Max. pressure	from 1 up to 3 sections 370 bar (5450 psi) _{p2}
	from 4 up to 6 sections 350 bar (5070 psi)
	from 7 up to 10 sections 325 bar (4710 psi)
Max. back pressure on outlet T port	25 bar (360 psi)
Number sections	from 1 to 10
Internal leakage A(B)⇒T	Δp = 100bar (1450 psi) 10 cm ³ /min (0.61 in ³ /min)
Fluid	Mineral oil
Fluid temperature	with NBR (BUNA-N) seals from -30°C to 80°C - from -22 °F to 176 °F
Viscosity	operating range from 10 to 400 mm ² /s - from 10 to 400 cSt
Contamination level	16/14/12 - ISO 4406 - NAS1638 class 6
Ambient operating temperature	without electric devices from -40°C to 60°C - from 40 °F to 140 °F
	with electric devices from -20°C to 50°C - from -4 °F to 122 °F

RQ130 Specifications

Nominal ow rating	130 l/min - (34.3 Us gpm)
Max. pressure	from 1 up to 3 sections 370 bar (5450 psi)
	from 4 up to 6 sections 350 bar (5070 psi)
	from 7 up to 10 sections 325 bar (4710 psi)
Max. back pressure on outlet T port	25 bar (360 psi)
Number sections	from 1 to 10
Internal leakage A(B)⇒T	Δp = 100bar (1450 psi) 10 cm ³ /min (0.61 in ³ /min)
Fluid	Mineral oil
Fluid temperature	with NBR (BUNA-N) seals from -30°C to 80°C - from -22 °F to 176 °F
Viscosity	operating range from 10 to 400 mm ² /s - from 10 to 400 cSt
Max. contamination level	16/14/12 - ISO 4406 - NAS1638 class 6
Ambient temperature	without electric devices from -40°C to 60°C - from 40 °F to 140 °F
	with electric devices from -20°C to 50°C - from -4 °F to 122 °F

HC-D4 MULTI-PORT VALVE



APPLICATIONS

- Excavators
- Cranes
- Backhoe loaders
- Wheel loaders
- Presses
- Boom trucks
- Forklifts

PRODUCT INTRODUCTION

HC-D4 series multiport directional valves have common inlet and outlet ports, which can form series and parallel oil circuits. It has the advantages of simple structure, good versatility, small internal leakage, not easy to leak, reliable operation, and good stability of the safety valve. And has a variety of slide valve functions. This valve is available for multi-unit selection, and can return oil normally or be used across bridges. This series of valves has more spool functions to choose from.

Application areas: excavators, cranes, aerial work platforms, backhoe loaders, wheel loaders, rear-mounted excavating devices, presses, boom trucks, drilling rigs, forklifts, and coal mining machinery.

HC-D4 Specifications

Spool stroke (mm)	Nom. pressure (MPa)	Nom. flow (L/min)
±6	31.5	80

HC-D6 MULTI-PORT VALVE



APPLICATIONS

- Excavators
- Cranes
- Backhoe loaders
- Wheel loaders
- Presses
- Boom trucks
- Mounted cranes

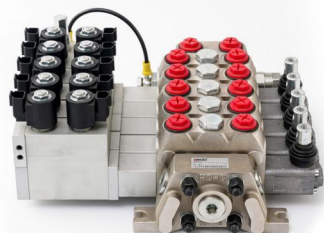
PRODUCT INTRODUCTION

HC-D6 series multiport directional valve has a chip structure, small size, beautiful appearance, good versatility, small internal leakage, not easy to leak, reliable operation, good stability of the safety valve, and has a variety of slide valves function. This valve is available for multi-unit selection, with different control modes such as manual, hydraulic, pneumatic, electro-hydraulic and electrical control. The working valve plate can be equipped with an auxiliary valve, and this series of valves has more valve core functions to choose from. Used in rear-mounted excavating devices, backhoe loaders, wheel loaders, boom trucks and truck-mounted cranes, etc.

HC-D6 Specifications

Spool stroke (mm)	Nom. pressure (MPa)	Nom. flow (L/min)
±7	31.5	100

DCV60 MULTIPORT VALVE



APPLICATIONS

- Excavators
- Cranes
- Backhoe loaders
- Wheel loaders
- Presses
- Construction machinery

PRODUCT INTRODUCTION

The DCV60 series multiport directional valve has a chip structure, with beautiful appearance, good versatility, small internal leakage, not easy to leak externally, reliable operation, good stability of the safety valve, and has a variety of slide valve functions. This valve is available for multi-unit selection, with different control modes such as manual, hydraulic, pneumatic, electro-hydraulic and electrical control. The working valve plate can be equipped with an auxiliary valve, and this series of valves has more valve core functions to choose from. It can be used in construction machinery, cranes and other mobile machinery that require the manipulation and execution of multiple elements.

DVC Specifications

	Spool stroke (mm)	Nom.pressure (MPa)	Nom.flow (L/min)
DCV60	±5	31.5	60
DCV100	±7	31.5	100

